

NOTE:
FOR ACCESS TO FACILITIES ON ADJACENT
PROPERTIES, SEE CIVIL DRAWINGS



LANDSCAPE ARCHITECTURE • MASTER PLANNING • URBAN DESIGN
1608 EASTERN AVENUE // BALTIMORE, MD 21231
410.732.1910 // 410.732.1960 FAX // WWW.OASISDESIGNGROUP.COM

REVISIONS		
REV. #	DATE	DESCRIPTION
1	11.06.2015	65% PROGRESS SET
2	12.11.2015	95% PROGRESS SET

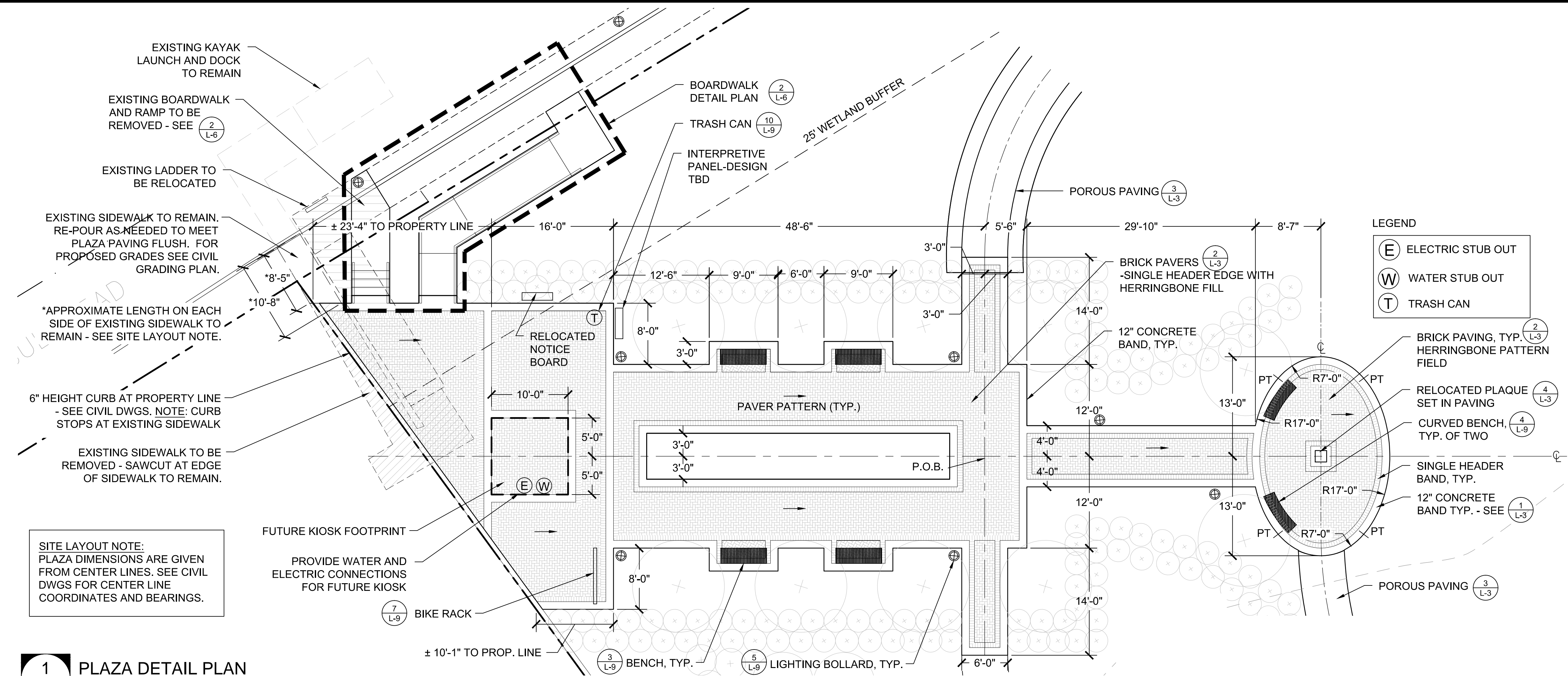
DATE:	NOVEMBER 2015
JOB NUMBER:	
SCALE:	AS SHOWN
DRAWN BY:	MAGJUG
DESIGNED BY:	SS/MAG
APPROVED BY:	SS
FOLDER REFERENCE:	



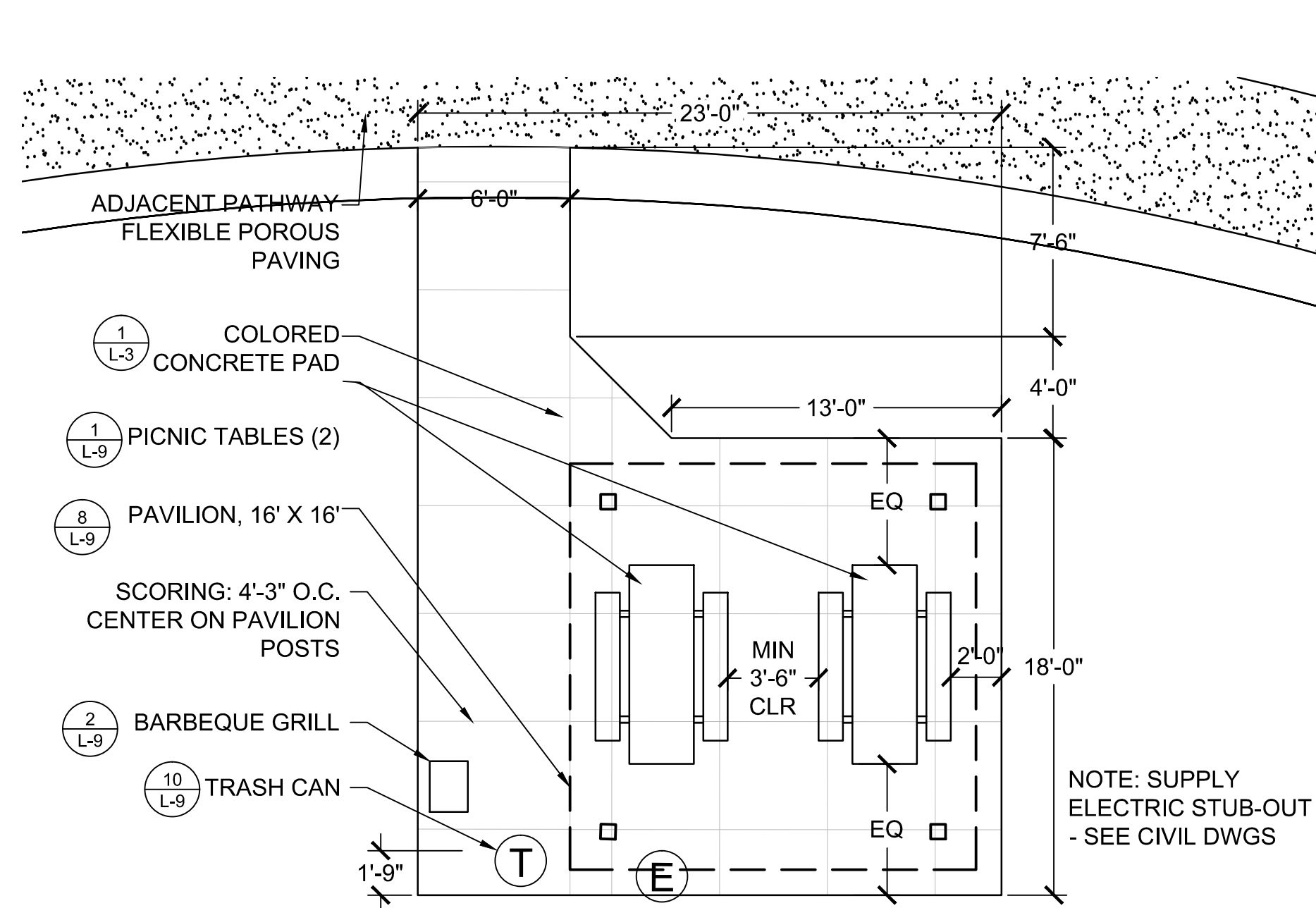
● Engineering ● Environmental Sciences
● Construction Services ● Land Planning & Surveying
ANNAPOLIS ● CENTREVILLE ● ELKTON ● SALISBURY ● WILMINGTON
320 PENNSYLVANIA AVENUE
CENTREVILLE, MARYLAND 21617
(410) 758-2237 * FAX (410) 758-2464
www.mccrone-inc.com Copyright © 2015

CALLOUT & MATERIALS PLAN
ON THE LANDS OF:
CENTREVILLE WHARF
THIRD ELECTION DISTRICT, QUEEN ANNE'S COUNTY, MARYLAND
TAX MAP 35H, GRID 12, PARCEL 1303, LOTS 1 & 2
PREPARED FOR: THE TOWN COUNCIL OF CENTREVILLE

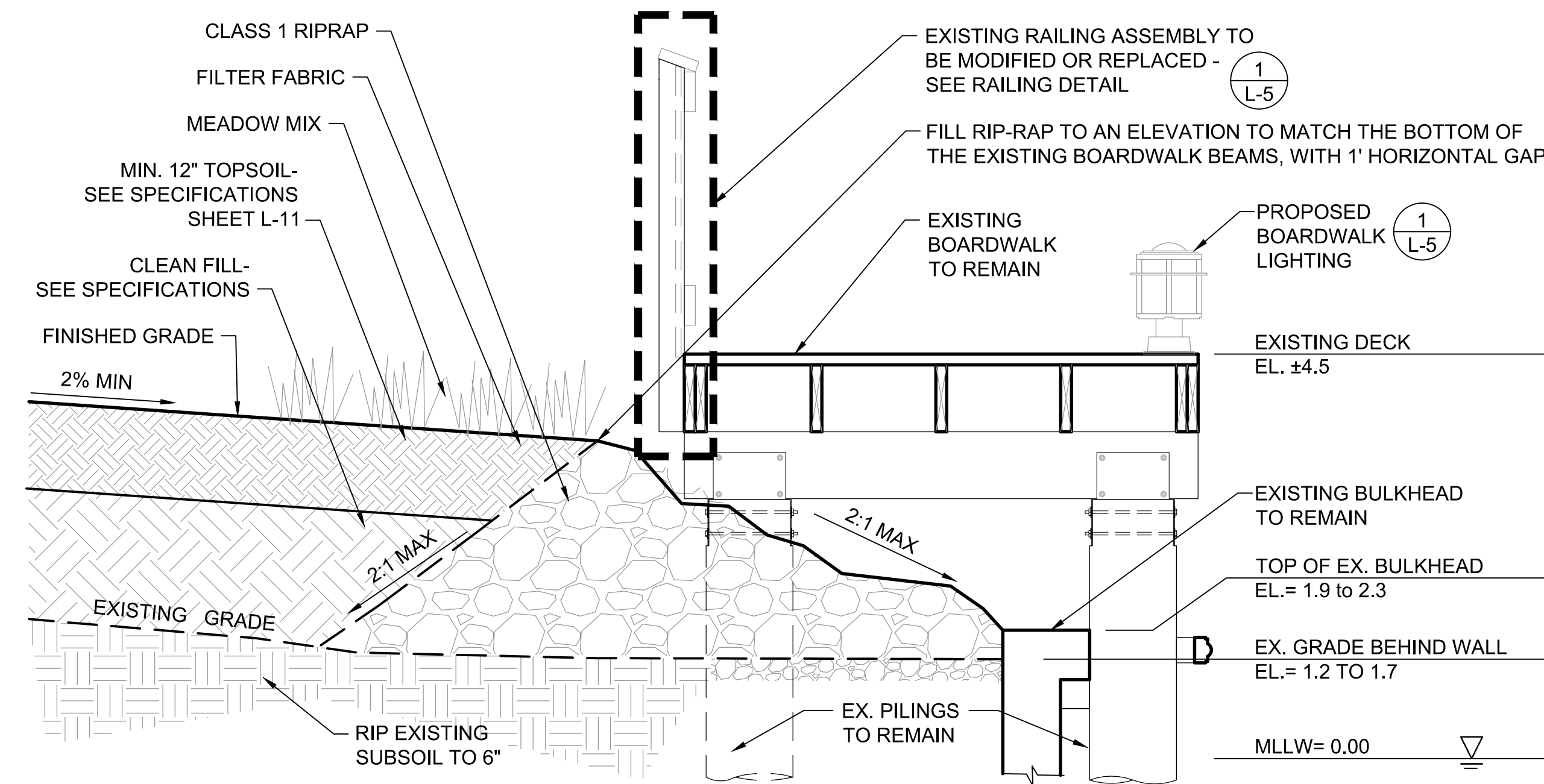
SHEET NO.:
L-1
FILE NO.:



1 PLAZA DETAIL PLAN
L-2 1/8" = 1' - 0"



2 TYPICAL PICNIC AREA PLAN
L-2 3/16" = 1' - 0"



3 FILL BEHIND EXISTING BOARDWALK
L-2 NOT TO SCALE

Z:\Projects\Centreville Wharf\CAD\L-2 Detail Plans.dwg L-2

Monday, January 18, 2016 11:01:24 AM



LANDSCAPE ARCHITECTURE • MASTER PLANNING • URBAN DESIGN
1608 EASTERN AVENUE // BALTIMORE, MD 21231
410.732.1910 // 410.732.1960 FAX // WWW.OASISDESIGNGROUP.COM

REVISIONS		
REV. #	DATE	DESCRIPTION
1	11.06.2015	65% PROGRESS SET
2	12.11.2015	95% PROGRESS SET

DATE: NOVEMBER 2015
JOB NUMBER:
SCALE: AS SHOWN
DRAWN BY: MAGJG
DESIGNED BY: SS/MAG
APPROVED BY: SS
FOLDER REFERENCE:

McCRONE

• Engineering • Environmental Sciences
• Construction Services • Land Planning & Surveying

ANNAPOLIS • CENTREVILLE • ELKTON • SALISBURY • WILMINGTON

320 PENNSYLVANIA AVENUE
CENTREVILLE, MARYLAND 21617
(410) 758-2237 • FAX (410) 758-2464
Copyright © 2015

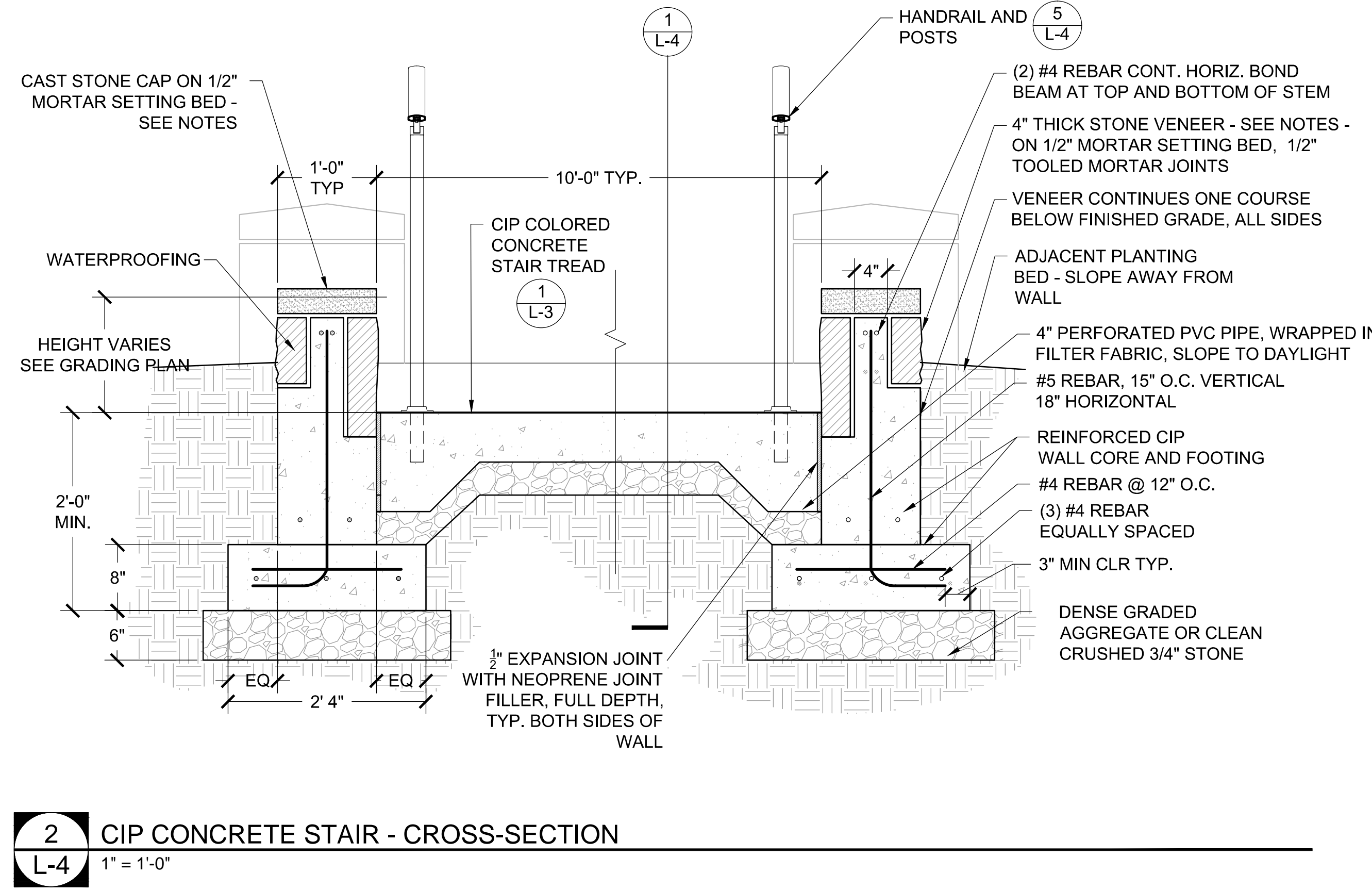
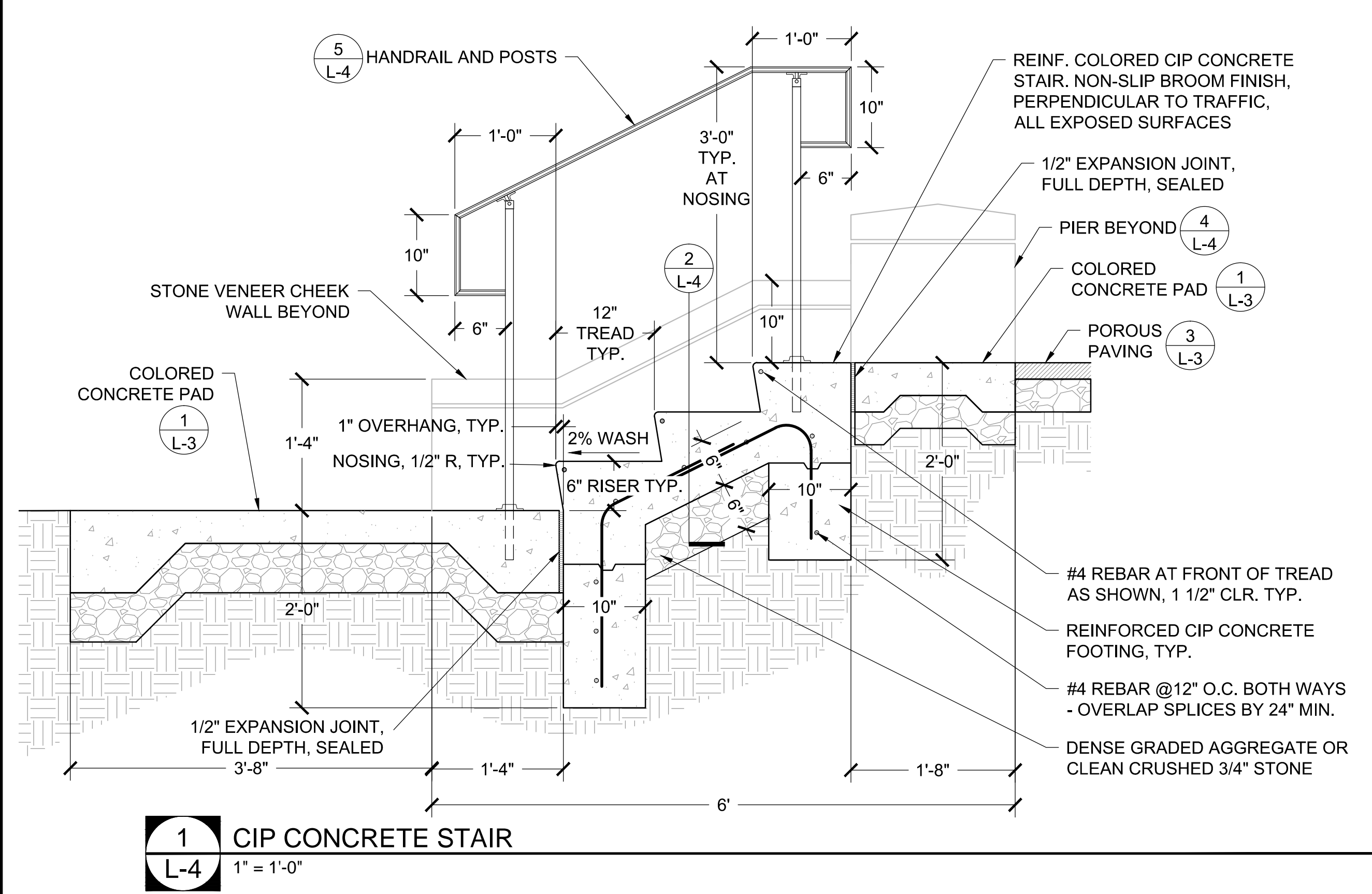
DETAIL PLANS
ON THE LANDS OF:
CENTREVILLE WHARF
THIRD ELECTION DISTRICT, QUEEN ANNE'S COUNTY, MARYLAND

TAX MAP 35H, GRID 12, PARCEL 1303, LOTS 1 & 2
PREPARED FOR: THE TOWN COUNCIL OF CENTREVILLE

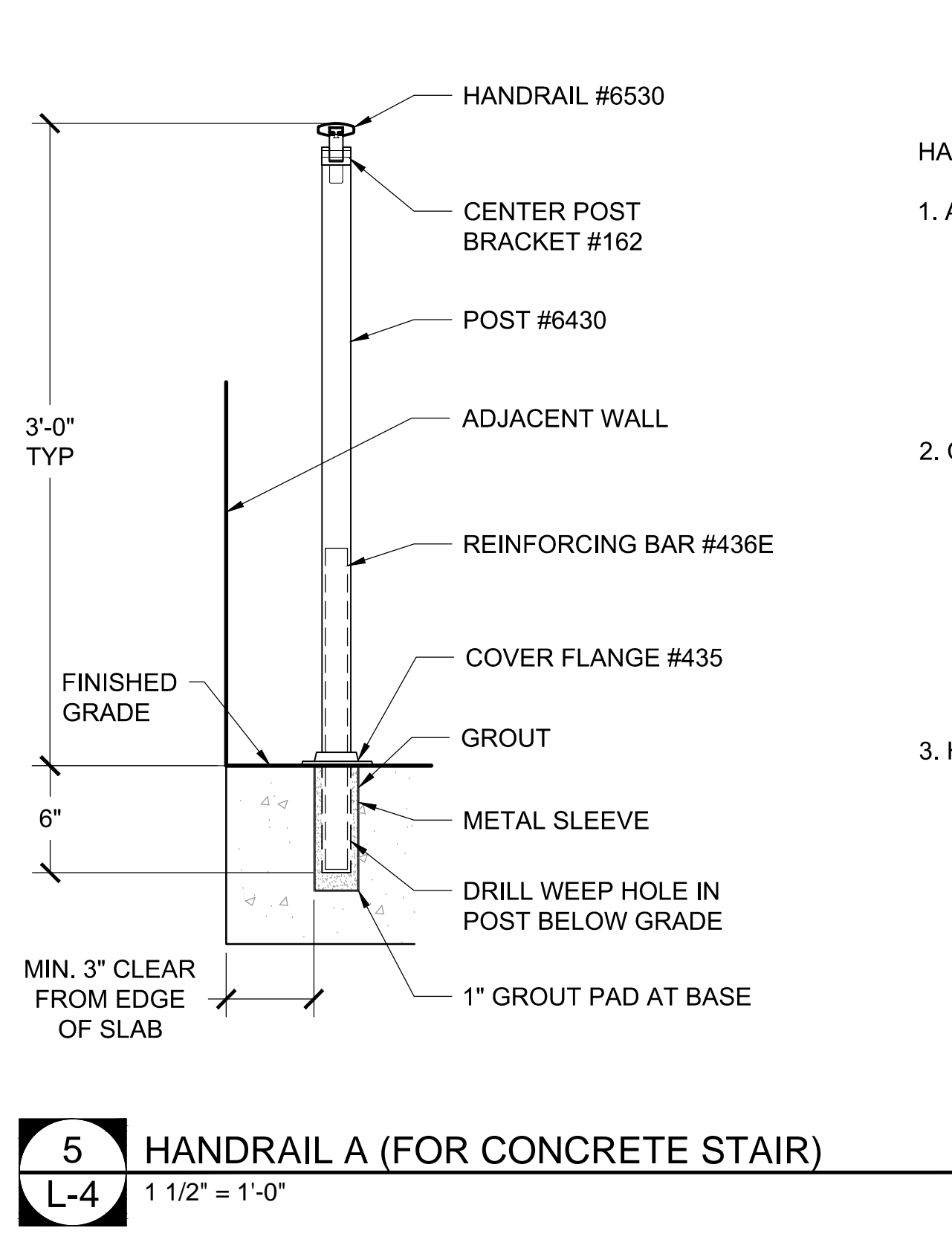
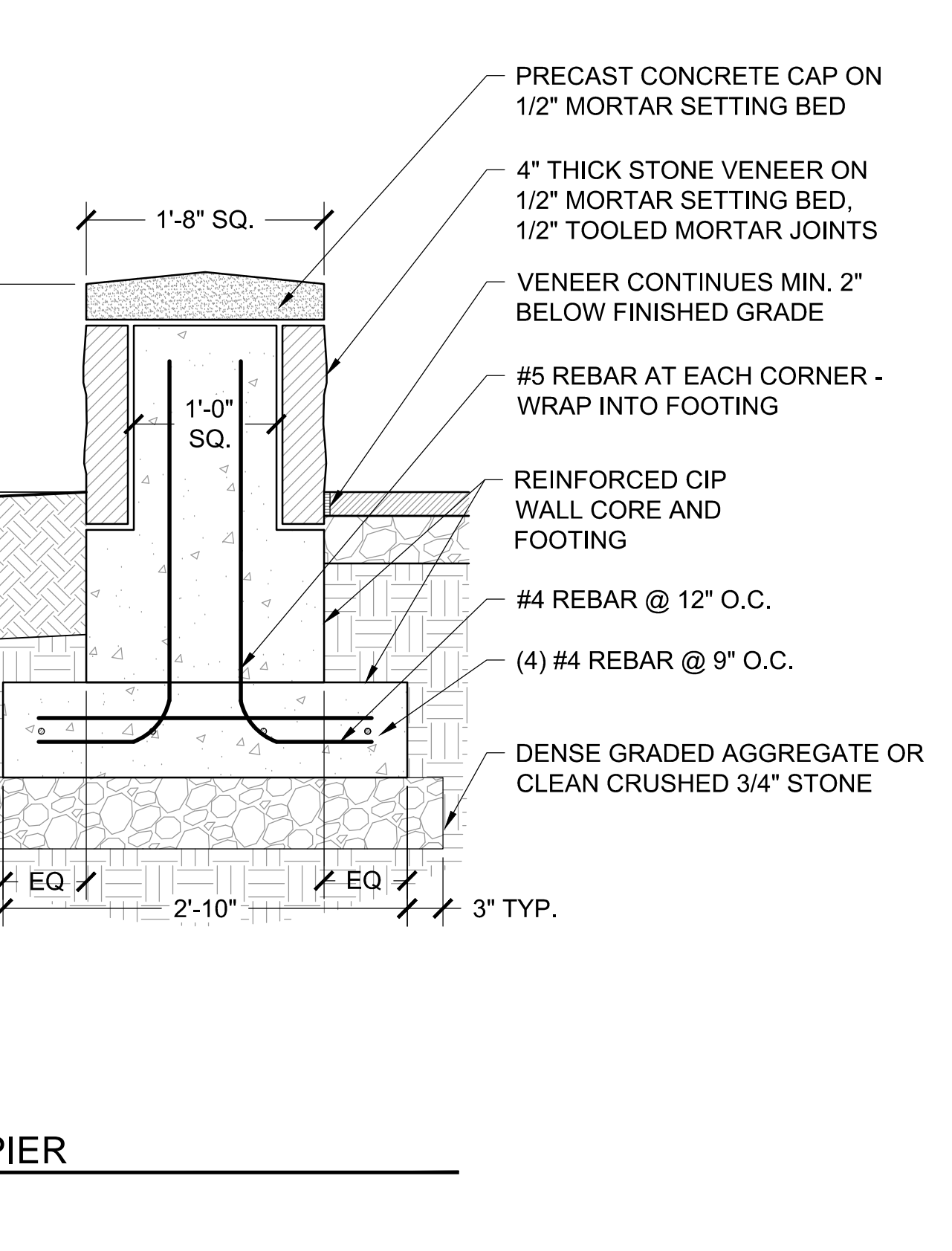
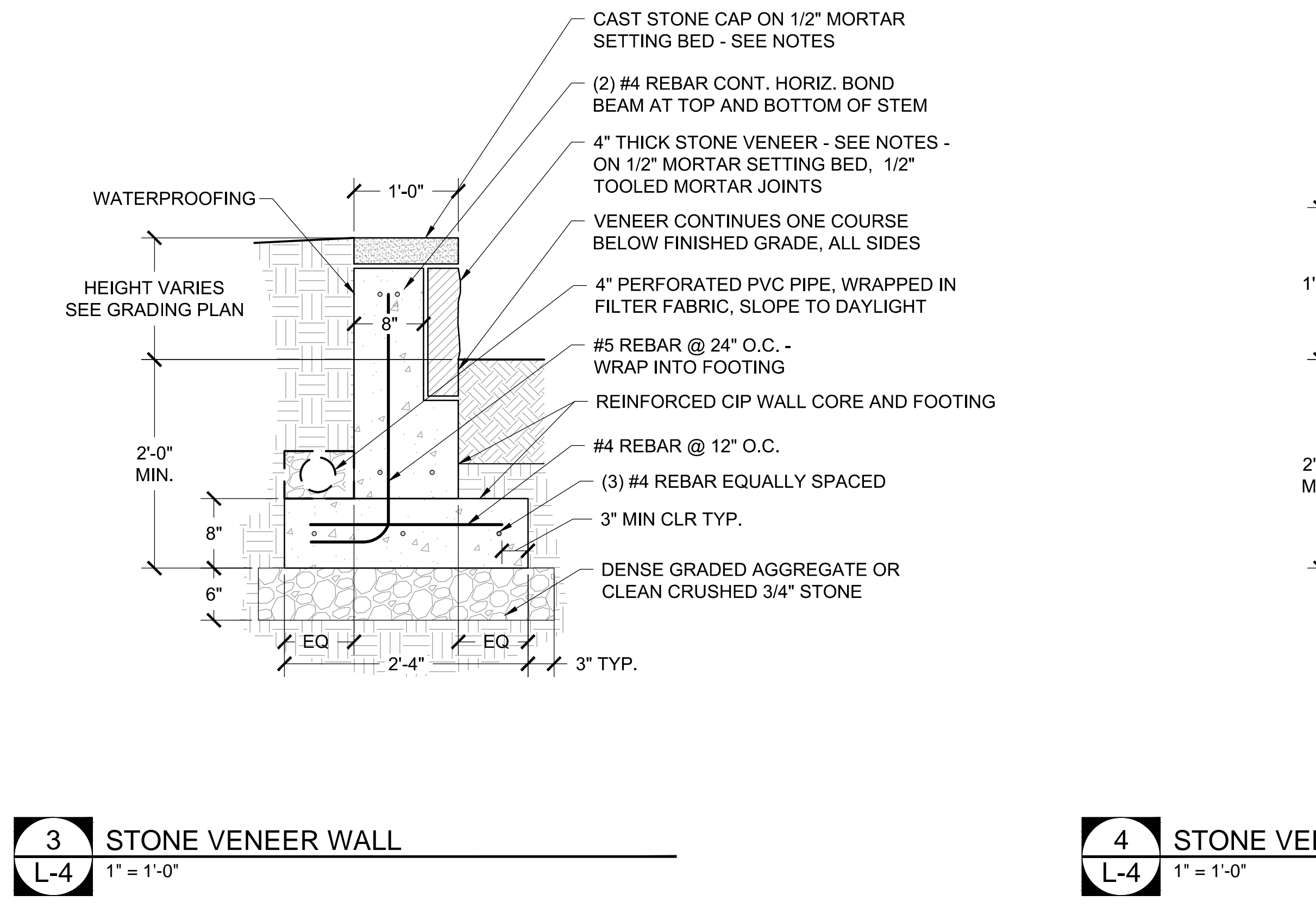
SHEET NO.:
L-2
FILE NO.:

Z:\Projects\Centreville Wharf\CAD\L-3-8 Details.dwg L-4

Monday, January 18, 2016 11:02:44 AM



- NOTES:
- INTEGRAL COLOR ADMIXTURE: SCOFIELD CHROMIX ADMIXTURE C-11 DESERT SAND CONTACT: FORM SERVICES INC BALTIMORE, MD (410) 247-9500
 - BRICK PAVERS: ENDICOTT BRICK PAVERS COLOR: ROSE BLEND CONTACT: POTOMAC VALLEY BRICK (410) 682-6700 BALTIMORE, MD WWW.PVBRICK.COM
 - MORTAR COLOR: SUBMIT SAMPLES FOR SELECTION BY OWNER
 - FLEXIBLE POROUS PAVEMENT: POROUS PAVE XL SERIES COLOR: TAN. MANUFACTURER: POROUS PAVE, INC., GRANT, MICHIGAN. (888) 448-3873 WWW.POROUSPAVING.COM OR APPROVED EQUIVALENT
 - STONE VENEER: LEDGE ROCK BUILDING STONE 4" MAXIMUM NATURAL STRIPS CONTACT: VINCI STONE (410) 442-4000 MARRIOTTVILLE, MD
 - CAST STONE: COLOR TO BE CHOSEN TO MATCH STONE VENEER. SUBMIT SAMPLES FOR SELECTION BY OWNER



- HANDRAIL A NOTES:
- ALL NUMBERED PARTS ARE ALUMINUM COMPONENTS BY JULIUS BLUM AND CO. WOODRIDGE, NJ (800) 526-6293 CARLSSTADT RAILING SYSTEM MATERIAL: ALUMINUM
 - CONTRACTOR SHALL ENGINEER HANDRAIL AND DETERMINE APPROPRIATE FITTINGS, SUBMIT DETAILED SHOP DRAWINGS FOR APPROVAL. OBTAIN APPROVAL BEFORE ORDERING OR BEGINNING CONSTRUCTION. INSTALL PER MANUFACTURER'S WRITTEN INSTRUCTIONS.
 - HANDRAIL SHALL COMPLY WITH ALL REQUIREMENTS FOR ADA ACCESSIBLE ROUTES (LATEST EDITION)



REVISIONS		
REV. #	DATE	DESCRIPTION
1	11.06.2015	65% PROGRESS SET
2	12.11.2015	95% PROGRESS SET

DATE: NOVEMBER 2015
JOB NUMBER:
SCALE: AS SHOWN
DRAWN BY: MAGJUG
DESIGNED BY: SSMAG
APPROVED BY: SS
FOLDER REFERENCE:

McCRONE

• Engineering • Environmental Sciences
• Construction Services • Land Planning & Surveying

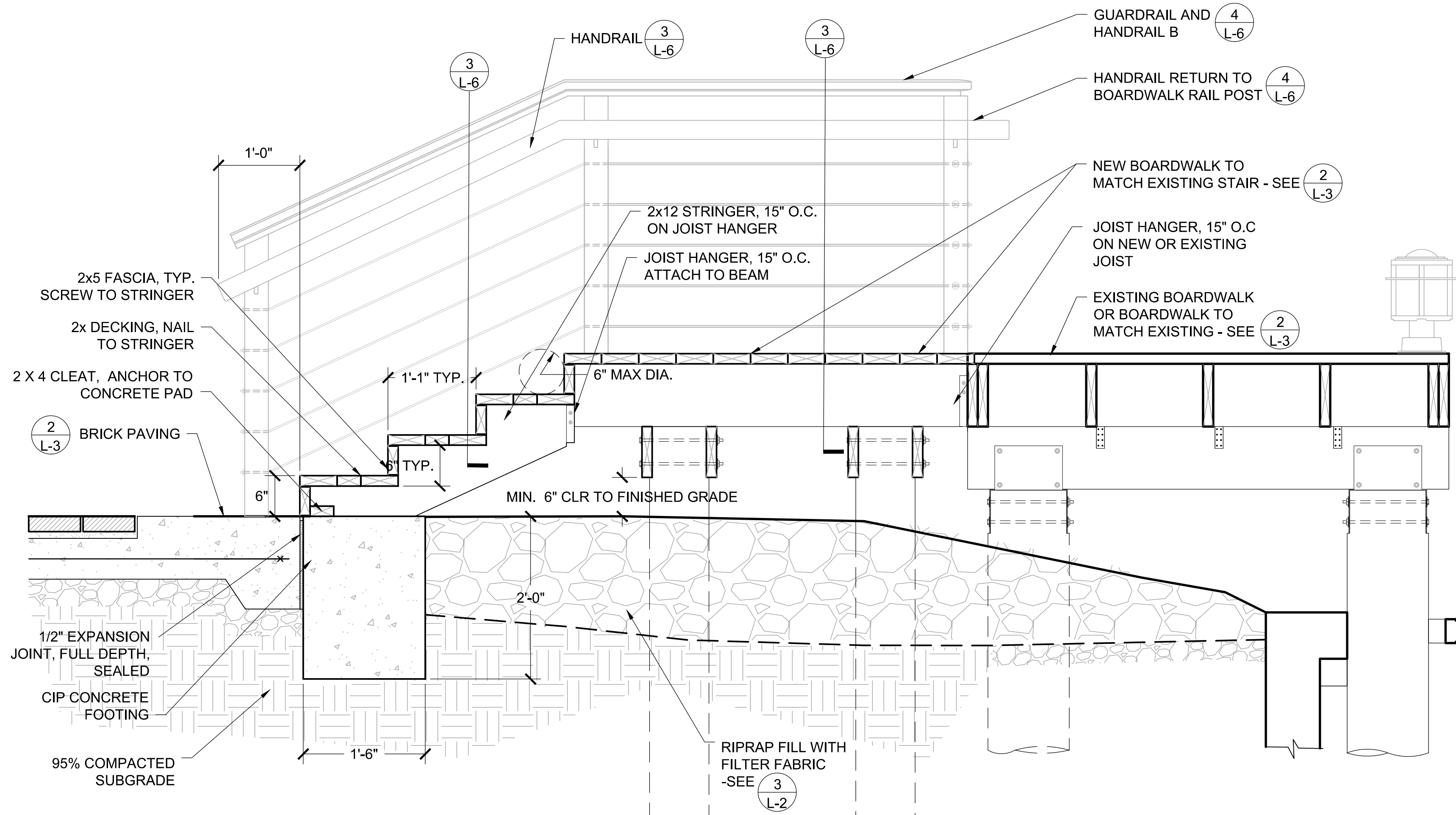
ANNAPOLIS • CENTREVILLE • ELKTON • SALISBURY • WILMINGTON

320 PENNSYLVANIA AVENUE
CENTREVILLE, MARYLAND 21617
(410) 758-2237 * FAX (410) 758-2464
www.mccrone-inc.com Copyright © 2015

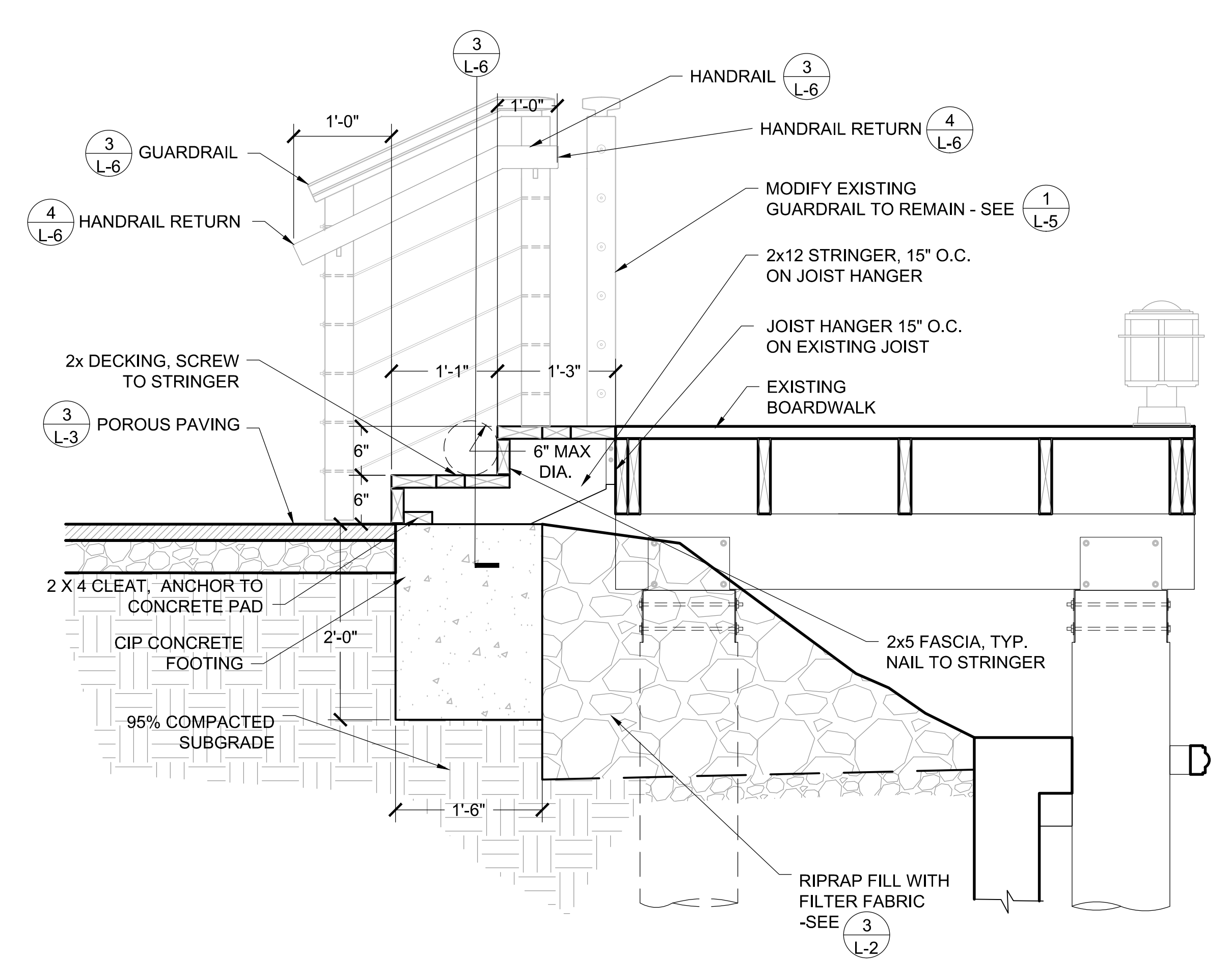
DETAILS - STAIR AND WALLS
ON THE LANDS OF:
CENTREVILLE WHARF
THIRD ELECTION DISTRICT, QUEEN ANNE'S COUNTY, MARYLAND

TAX MAP 35H, GRID 12, PARCEL 1303, LOTS 1 & 2
PREPARED FOR: THE TOWN COUNCIL OF CENTREVILLE

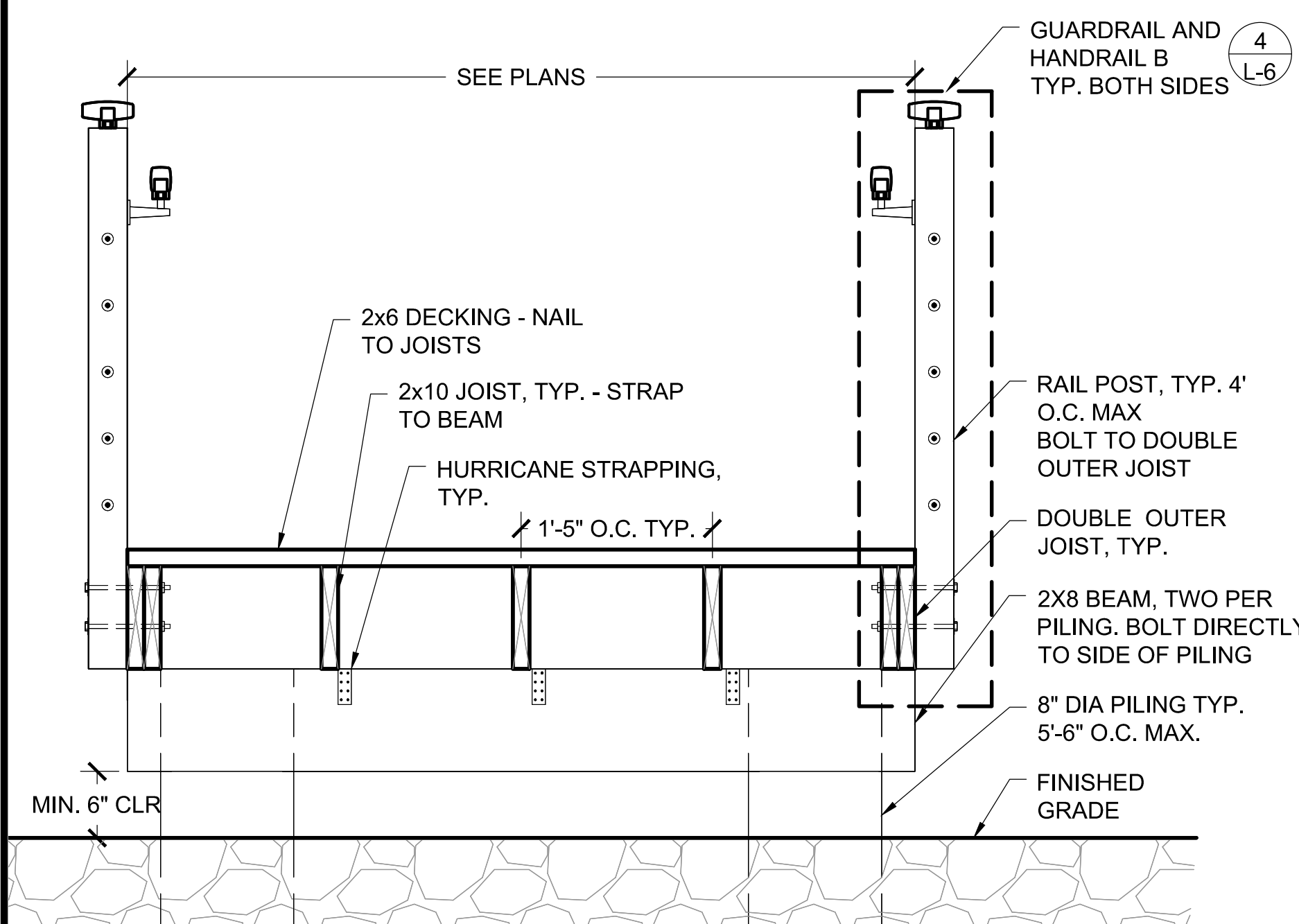
SHEET NO.:
L-4
FILE NO.:



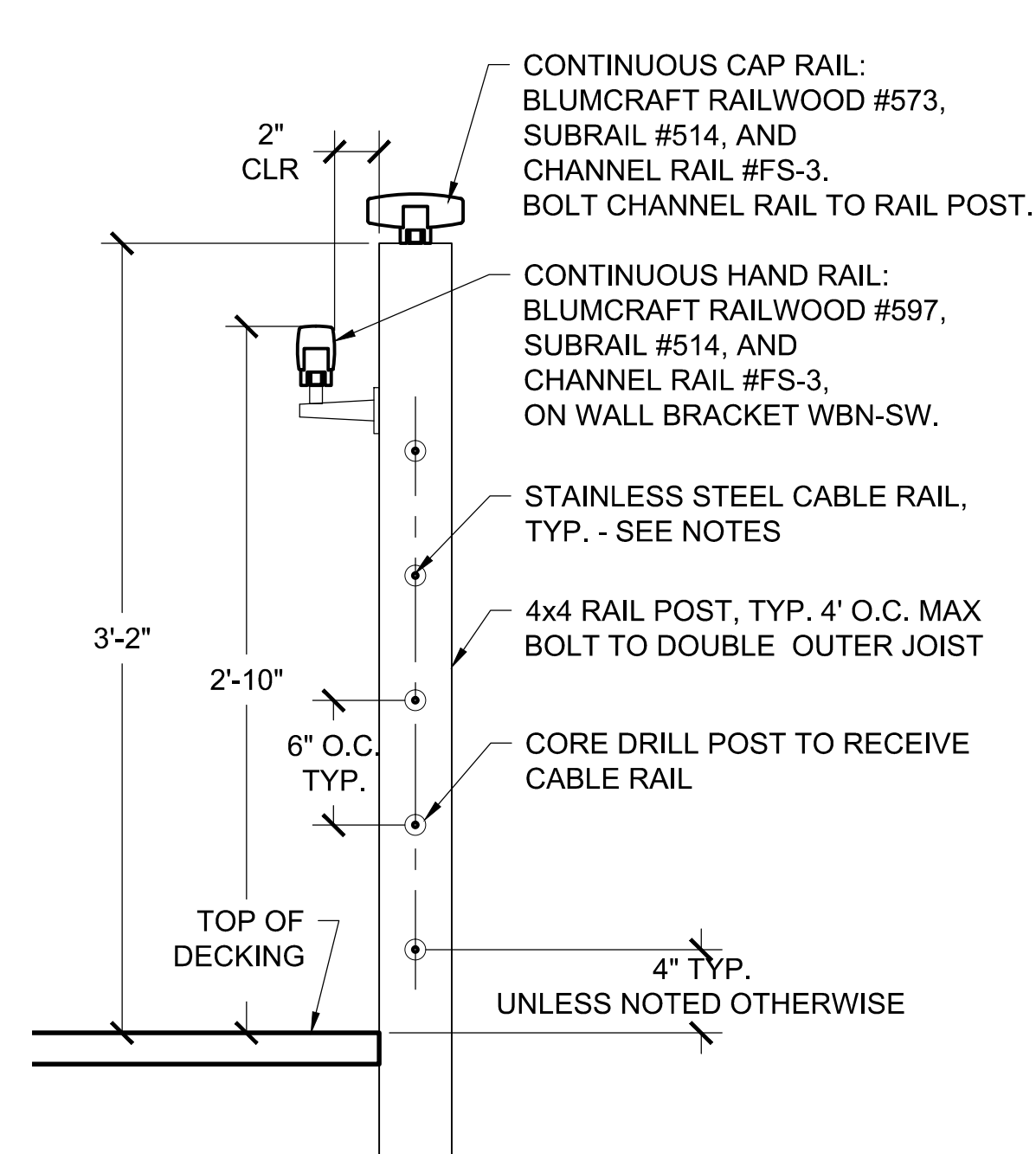
1 LONG STAIR TO BOARDWALK
L-6 1" = 1'-0"



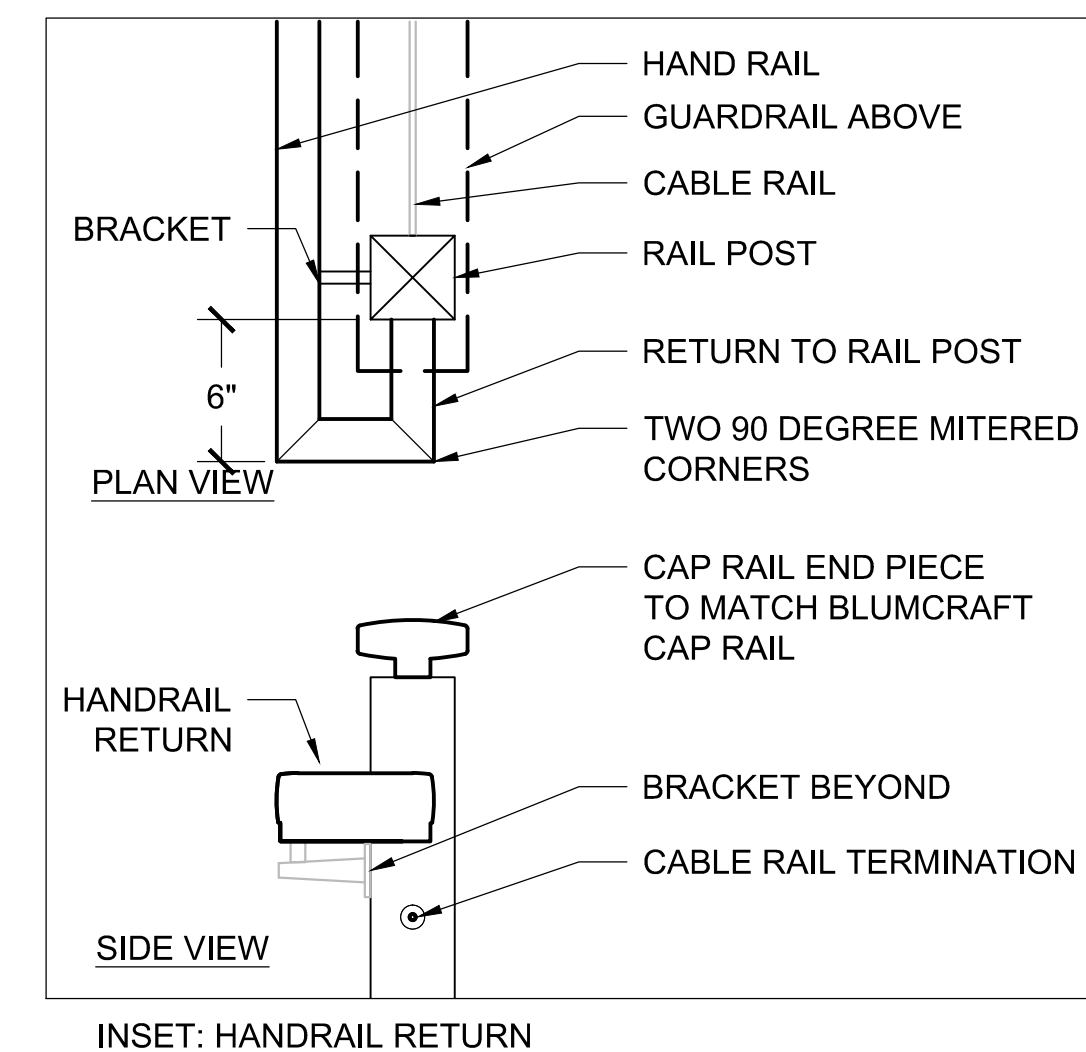
2 SHORT STAIR TO BOARDWALK
L-6 1" = 1'-0"



3 PROPOSED RAMP AND STAIRS - TYPICAL CROSS-SECTION
L-6 1" = 1'-0"



4 GUARDRAIL AND HANDRAIL B (ON BOARDWALK, RAMP, AND STAIRS)
L-6 1 1/2" = 1'-0"



CABLE RAIL NOTE:

CABLE RAIL CONFIGURATION IS SHOWN FOR DESIGN INTENT ONLY. CONTRACTOR SHALL ENGINEER CABLE RAIL AND DETERMINE APPROPRIATE FITTINGS, ETC. SUBMIT CUT SHEET AND SHOP DRAWINGS FOR CABLE RAIL SYSTEM. OBTAIN OWNER'S APPROVAL BEFORE ORDERING.

BOARDWALK NOTES:

1. ALL BOARDWALK SUBSTRUCTURE HARDWARE AND CONNECTIONS SHOULD BE GALVANIZED MATERIALS.
2. ALL DECK FASTENERS SHALL BE 316 STAINLESS STEEL SCREWS
3. ALL SUBSTRUCTURE WOOD AND TIMBERS SHALL BE PRESSURE TREATED SOUTHERN YELLOW PINE

GUARDRAIL AND HANDRAIL B NOTES:

1. ALL NUMBERED PARTS BY: C.R. LAURENCE, BLUMCRAFT OF PITTSBURGH, PITTSBURGH, PA (412) 681-2400, WWW.CRL-ARCH.COM
2. CONTRACTOR SHALL ENGINEER HANDRAIL AND DETERMINE APPROPRIATE FITTINGS. SUBMIT DETAILED SHOP DRAWINGS FOR APPROVAL. OBTAIN APPROVAL BEFORE ORDERING OR BEGINNING CONSTRUCTION. INSTALL PER MANUFACTURER'S WRITTEN INSTRUCTIONS.
3. HANDRAIL SHALL COMPLY WITH ALL REQUIREMENTS FOR ADA ACCESSIBLE ROUTES (LATEST EDITION)

Z:\Projects\Centreville Wharf\CAD\L-3-8 Details.dwg L-6

Monday, January 18, 2016 11:02:44 AM



LANDSCAPE ARCHITECTURE, MASTER PLANNING, URBAN DESIGN
1608 EASTERN AVENUE // BALTIMORE, MD 21231
410.732.1910 // 410.732.1960 FAX // WWW.OASISDESIGNGROUP.COM

REVISIONS		
REV. #	DATE	DESCRIPTION
1	11.06.2015	65% PROGRESS SET
2	12.11.2015	95% PROGRESS SET

DATE:	NOVEMBER 2015
JOB NUMBER:	
SCALE:	AS SHOWN
DRAWN BY:	MAGJUG
DESIGNED BY:	SS/MAG
APPROVED BY:	SS
FOLDER REFERENCE:	

SEAL _____
DATE 01.20.2015

McCRONE

● Engineering ● Environmental Sciences
● Construction Services ● Land Planning & Surveying

ANNAPOLIS ● CENTREVILLE ● ELKTON ● SALISBURY ● WILMINGTON

320 PENNSYLVANIA AVENUE
CENTREVILLE, MARYLAND 21617
(410) 758-2237 * FAX (410) 758-2464

www.mccrone-inc.com Copyright © 2015

DETAILS - BOARDWALK RAMP AND STAIRS

ON THE LANDS OF:
CENTREVILLE WHARF

THIRD ELECTION DISTRICT, QUEEN ANNE'S COUNTY, MARYLAND

TAX MAP 35H, GRID 12, PARCEL 1303, LOTS 1 & 2
PREPARED FOR: THE TOWN COUNCIL OF CENTREVILLE

SHEET NO.:
L-6

FILE NO.:

PICNIC TABLE:
 QTY: (6) TABLES
 MANUFACTURER: VICTOR STANLEY
 CONTACT: VICTOR STANLEY
 P.O. DRAWER 330
 DUNKIRK, MD 20754 USA
 301-855-8300
 MODEL: PT-2 8' (6' WITH 2
 EXTENSIONS)
 COLOR: TITANIUM
 MOUNT: SURFACE MOUNT



1 PICNIC TABLE
 L-9 NOT TO SCALE

CHARCOAL GRILL:
 QTY: (3) GRILLS
 MANUFACTURER: ULINE
 CONTACT: ULINE NYC/PHILA
 400 BOULDER DRIVE
 BREINGSVILLE, PA 18031
 1-800-295-5510
 MODEL: H-4419
 MOUNT: IN-GROUND



2 GRILL
 L-9 NOT TO SCALE

BENCH:
 QTY: (8) BENCHES
 MANUFACTURER: VICTOR STANLEY
 CONTACT: VICTOR STANLEY
 P.O. DRAWER 330
 DUNKIRK, MD 20754 USA
 301-855-8300
 MODEL: RB-28 TO MATCH EXISTING
 VICTOR STANLEY BENCH
 ONSITE - CONTRACTOR TO
 VERIFY EXISTING BENCH
 MODEL / CONFIGURATION
 COLOR: TITANIUM
 MOUNT: GROUND MOUNT INTO
 CONCRETE SUB BASE



3 BENCH
 L-9 NOT TO SCALE



CURVED BENCH:
 QTY: (2) BENCHES
 MANUFACTURER: VICTOR STANLEY
 CONTACT: VICTOR STANLEY
 P.O. DRAWER 330
 DUNKIRK, MD 20754 USA
 301-855-8300
 MODEL: FRB-2 6'
 COLOR: TITANIUM
 MOUNT: IN-GROUND
 ARMRESTS: NONE

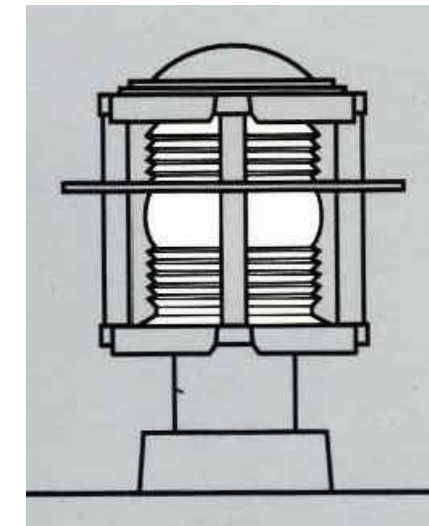
4 CURVED BENCH
 L-9 NOT TO SCALE

PATHWAY LIGHT:
 QTY: (21) LIGHTS
 MANUFACTURER: LUMEC
 CONTACT: WARREN SPARKES
 AMBIANCE LIGHTING
 5303 CHRYSLER WAY
 SUITE 101
 UPPER MARLBORO, MD
 888-777-5117
 MODEL: CANDELA SERIES
 CANDB1-H15
 FINISH: NP (Natural Aluminum)
 MOUNT: IN-GROUND
 PROVIDE OPTION DR: 120v POWER
 RECEPTACLE



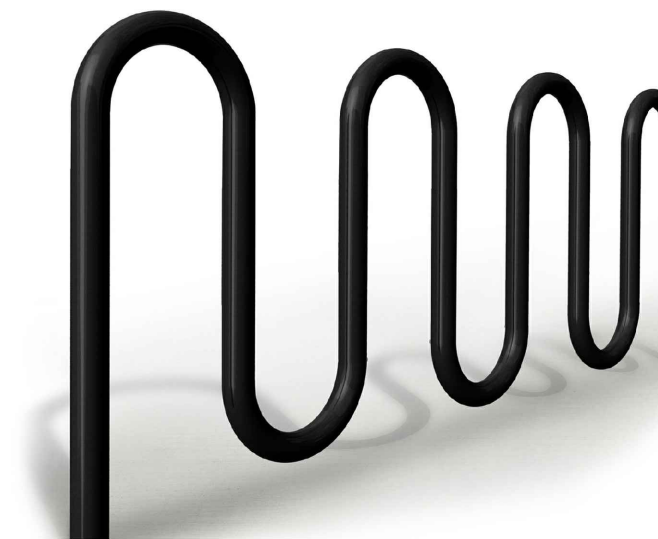
5 PATHWAY BOLLARD LIGHT
 L-9 NOT TO SCALE

BOARDWALK LIGHT:
 QTY: (15) LIGHTS
 MANUFACTURER: LUMEC
 CONTACT: WARREN SPARKES
 AMBIANCE LIGHTING
 5303 CHRYSLER WAY
 SUITE 101
 UPPER MARLBORO, MD
 888-777-5117
 MODEL: CANDELA SERIES
 CANDB1-H15
 HEIGHT: 15"
 FINISH: NP (Natural Aluminum)
 MOUNT: MOUNTING PLATE
 PROVIDE OPTION DR: 120v POWER
 RECEPTACLE



6 BOARDWALK LIGHT
 L-9 NOT TO SCALE

BIKE RACK:
 QTY: (1) RACK
 MANUFACTURER: VICTOR STANLEY
 CONTACT: VICTOR STANLEY
 P.O. DRAWER 330
 DUNKIRK, MD 20754 USA
 301-855-8300
 MODEL: BRCS 107
 COLOR: TITANIUM
 MOUNT: IN-GROUND



7 BIKE RACK
 L-9 NOT TO SCALE

PAVILION:
 QTY: (3) PAVILIONS
 MANUFACTURER: CLASSIC
 RECREATION SYSTEMS
 CONTACT: BRIAN LEWIS
 CUNNINGHAM REC.
 P.O. BOX 487
 QUEENSTOWN, MD 21658
 800-233-0529
 MODEL: ASPEN 16' X 16'
 SEE SHEET L-8
 FOR INSTALLATION



8 PICNIC PAVILION
 L-9 NOT TO SCALE

TBD

9 PERFORMANCE PAVILION
 L-9 NOT TO SCALE

STEELSITES TRASH RECEPTACLE:
 QTY: (4) RECEPTACLES
 MANUFACTURER: VICTOR STANLEY
 CONTACT: VICTOR STANLEY
 P.O. DRAWER 330
 DUNKIRK, MD 20754 USA
 301-855-8300
 MODEL: A-36
 COLOR: TITANIUM
 MOUNT: IN-GROUND



10 TRASH RECEPTACLES
 L-9 NOT TO SCALE

POLE LIGHT:
 QTY: (3) LIGHTS
 MANUFACTURER: LUMEC
 CONTACT: WARREN SPARKES
 AMBIANCE LIGHTING
 5303 CHRYSLER WAY
 SUITE 101
 UPPER MARLBORO, MD
 888-777-5117
 MODEL: CANDELA SERIES
 CAND1
 CN1-1A
 AM6
 HEIGHT: 15'
 FINISH: NP (Natural Aluminum)
 MOUNT: IN-GROUND
 PROVIDE OPTIONS:
 DR: 120v POWER RECEPTACLE
 BA: BANNER ARM
 HS: HOUSE SHIELD



11 POLE LIGHT
 L-9 NOT TO SCALE

Z:\Projects\Centreville Wharf\CAD\L-9 Site Furnishings.dwg L-9

Friday, December 11, 2015 4:10:13 PM



LANDSCAPE ARCHITECTURE, MASTER PLANNING, URBAN DESIGN
 1608 EASTERN AVENUE // BALTIMORE, MD 21231
 410.732.1910 // 41-732.1960 FAX // WWW.OASISDESIGNGROUP.COM

REV. #	DATE	DESCRIPTION
1	11.06.2015	65% PROGRESS SET
2	12.11.2015	95% PROGRESS SET

DATE: NOVEMBER 2015
 JOB NUMBER:
 SCALE: AS SHOWN
 DRAWN BY: MAGJG
 DESIGNED BY: SS/MAG
 APPROVED BY: SS
 FOLDER REFERENCE:

This document is the property of the firm and is to be used only for the project and site for which it was prepared. It is not to be distributed, copied, or used for any other project without the written consent of the firm. The user of this document warrants that it is a true and correct representation of the design and construction of the project.

MCCRONE

- Engineering
- Construction Services
- Environmental Sciences
- Land Planning & Surveying

ANNAPOLIS • CENTREVILLE • ELKTON • SALISBURY • WILMINGTON

320 PENNSYLVANIA AVENUE
 CENTREVILLE, MARYLAND 21617
 (410) 758-2237 * FAX (410) 758-2464
 www.mccrone-inc.com Copyright © 2015

SITE FURNISHINGS
 ON THE LANDS OF:
CENTREVILLE WHARF
 THIRD ELECTION DISTRICT, QUEEN ANNE'S COUNTY, MARYLAND

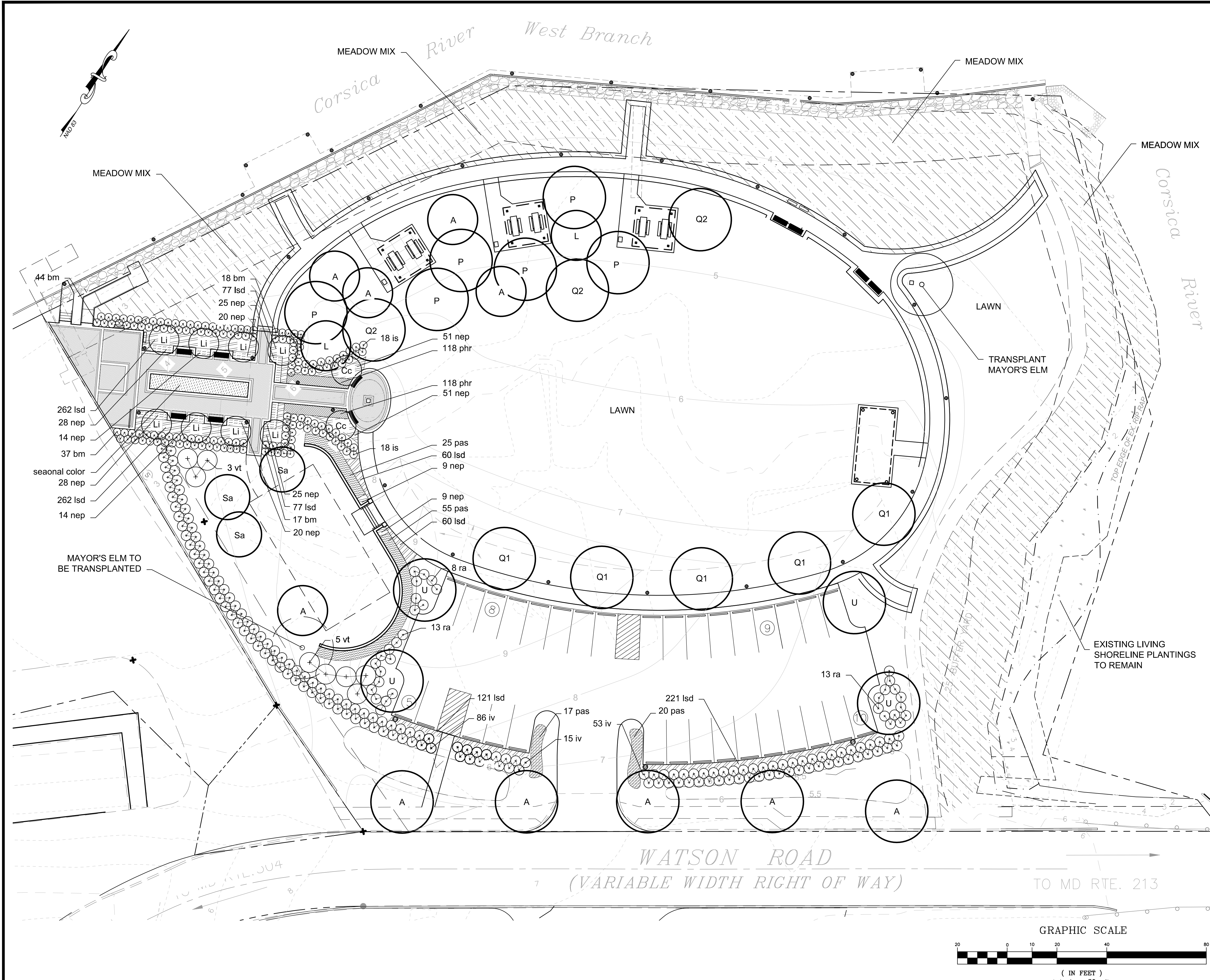
TAX MAP 35H, GRID 12, PARCEL 1303, LOTS 1 & 2
 PREPARED FOR: THE TOWN COUNCIL OF CENTREVILLE

SHEET NO.:
L-9

FILE NO.:

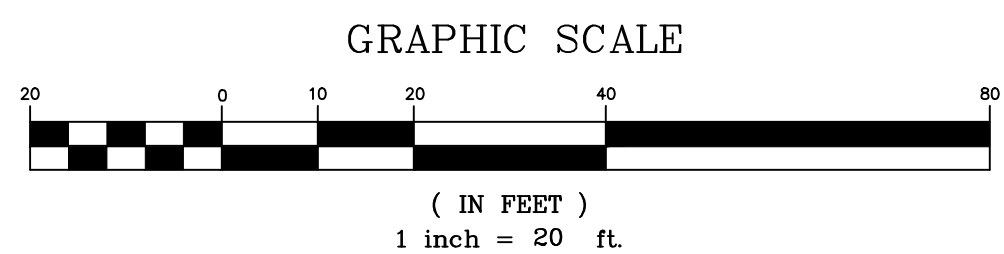
Z:\Projects\Centreville Wharf\CAD\10-12 Planning Plan.dwg L-10

Wednesday, January 20, 2016 10:29:59 AM



PARK PLANTING SCHEDULE

CANOPY TREES						
QTY	KEY	BOTANICAL/COMMON NAME	SIZE	SPACING	ROOT	REMARKS
10	A	Acer rubrum 'October Glory' October Glory Red Maple	2 1/2"-3" cal.	As shown	B & B	Full
2	L	Liquidambar styraciflua 'Rotundiloba' American Sweetgum	2-2 1/2" cal.	As shown	B & B	
6	P	Platanus occidentalis 'Bloodgood' Sycamore Tree	2 1/2"-3" cal.	As shown	B & B	Full
5	Q1	Quercus alba White Oak	2 1/2"-3" cal.	As shown	B & B	
3	Q2	Quercus phellos Willow Oak	2- 2 1/2" cal.	As shown	B & B	
4	U	Ulmus americana 'Princeton' American Elm	2 1/2"-3" cal.	As shown	B & B	
ORNAMENTAL TREES						
QTY	KEY	BOTANICAL/COMMON NAME	SIZE	SPACING	ROOT	REMARKS
2	Cc	Cercis canadensis 'Forest Pansy' Forest Pansy Eastern Redbud	10' Ht.	As shown	B & B	Multistem
8	Li	Lagerstroemia indica 'Biloxi' Biloxi Crape Myrtle (Pale Pink)	10' Ht.	As shown	B & B	Multistem
3	Sa	Sassafras albidum Sassafras	7' Ht.	As shown	B & B	
SHRUBS						
QTY	KEY	BOTANICAL/COMMON NAME	SIZE	SPACING	ROOT	REMARKS
116	bm	Buxus microphylla var. japonica 'Green Beauty' Green Beauty Boxwood	18" Ht.	3' o.c.	B&B	
36	is	Ilex glabra 'Shamrock' Shamrock Inkberry	24-30" Ht.	4' o.c.	B&B	
154	iv	Itea virginica 'Henry's Garnet' Virginia Sweetspire	18" Ht.	4' o.c.	B&B	
34	ra	Rhus aromatica 'gro-low' Sweet Sumac	24" Ht.	4' o.c.	cont.	
8	vt	Viburnum trilobum American Cranberry				
PERENNIALS						
QTY	KEY	BOTANICAL/COMMON NAME	SIZE	SPACING	ROOT	REMARKS
1140	lsd	Liriope spicata 'Silver Dragon' Silver Dragon Lilyturf	2 qt.	12" o.c.	cont.	
294	nep	Nepeta 'Walker's Low' Catmint	1 Gal.	15" o.c.	cont.	REMARKS
236	phr	Penstemon digitalis 'Husker Red' Husker Red Penstemon	1 gal.	12" o.c.	cont.	
GRASSES						
QTY	KEY	BOTANICAL/COMMON NAME	SIZE	SPACING	ROOT	REMARKS
117	pas	Panicum virgatum 'Shenandoah' Switchgrass	2 gal.	30" o.c.	cont.	



MEADOW MIX
Ernst Seed Mix
Xerces Mid-Atlantic Pollinator Mix - XERC00102



LANDSCAPE ARCHITECTURE • MASTER PLANNING • URBAN DESIGN
1608 EASTERN AVENUE // BALTIMORE, MD 21231
410.732.1910 // 41-732.1960 FAX // WWW.OASISDESIGNGROUP.COM

REVISIONS		
REV. #	DATE	DESCRIPTION
1	11.06.2015	65% PROGRESS SET
2	12.11.2015	95% PROGRESS SET

DATE: NOVEMBER 2015
JOB NUMBER:
SCALE: AS SHOWN
DRAWN BY: MAGJG
DESIGNED BY: SS/MAG
APPROVED BY: SS
FOLDER REFERENCE:



• Engineering • Environmental Sciences
• Construction Services • Land Planning & Surveying
ANNAPOLIS • CENTREVILLE • ELKTON • SALISBURY • WILMINGTON
320 PENNSYLVANIA AVENUE
CENTREVILLE, MARYLAND 21617
(410) 758-2237 * FAX (410) 758-2464
www.mccrone-inc.com Copyright © 2015

PLANTING PLAN - PARK
ON THE LANDS OF:
CENTREVILLE WHARF
THIRD ELECTION DISTRICT, QUEEN ANNE'S COUNTY, MARYLAND
TAX MAP 35H, GRID 12, PARCEL 1303, LOTS 1 & 2
PREPARED FOR: THE TOWN COUNCIL OF CENTREVILLE

SHEET NO.:
L-10
FILE NO.:

TOPSOIL NOTES

PART 1: GENERAL

1.1 DESCRIPTION

- A. Topsoil shall consist of furnishing and placing topsoil for lawn, shrub beds, planters, and tree pits. Topsoil shall be a rich, friable material conforming with the requirements of these specifications.
- B. Topsoil shall be placed at a depth of 12 inches in all unpaved areas and feathered to the final grade lines. Topsoil shall be placed in conformity with the requirements of these specifications.
- C. On site material is not suitable for use as topsoil. All topsoil must be obtained from a pre-approved off-site location. Topsoil shall be placed so that the grade shown on the plans is the final grade of soil at 85% compaction.

1.2 RELATED DOCUMENTS

- A. Drawings and general provisions of the Contract, including General and Supplementary Conditions apply to work of this section.

1.3 RELATED SECTIONS

- A. Planting Notes and Specifications

PART 2: PRODUCTS

2.1 DESCRIPTION

- A. Topsoil shall be friable loam topsoil of uniform quality, free from gravel, stones, and other materials retained on a 50 mm (2") sieve. Topsoil shall have no heavy clay, frozen clods, lumps, plants, roots, sticks, asphalt, concrete, or foreign materials harmful to plant growth.
- B. Topsoil shall be reasonably free of noxious perennial weeds or wood vegetations and completely void of Johnsongrass (*Sorghum halapense*) as determined through prior inspection by an authorized representative of the Department.

2.2 TESTING

- A. At least 30 days prior to ordering materials, the Contractor shall submit to the Engineer or the Engineer's representative certified tests and records for materials specified herein including topsoil source/s. No materials shall be ordered until the required test results and records have been reviewed and approved by the Engineer or the Engineer's representative. Delivered materials shall match the approved samples. Approval shall not constitute final acceptance. The Engineer reserves the right to reject, on or after delivery, any material that does not meet these specifications.
- B. Three soil samples shall be taken from each stock of topsoil to be used. Soil samples shall be submitted to a public agricultural extension service agency or other testing facility capable of all testing required under these specifications (See below Section 2.2. B) and approved by the Engineer. The testing laboratory for physical analysis shall have a minimum of five years experience with the test protocols of the USDA. Test results shall be sent directly from the testing facility to the Engineer.
- C. The method of testing topsoil shall be in accordance with the requirements of AASHTO T 88, Modified; AASHTO T 89, Method B;

AASHTO T 90, AASHTO T 267 and shall meet the following specified requirements:

1. Grading Analysis:

Sieve Designation Standard Alternate inches	Minimum Mass (Weight) Percent Passing
2 2 In.	100
0.2 No. 4	90
0.08 No. 10	80

	Minimum Percent	Maximum Percent
Passing 0.08 in. (No. 10) and retained on 0.003 in. (No. 200) sieve		
Sand:	30	40
Passing 0.003 in. (No. 200) sieve		
Silt:	40	60
Clay:	5	20

2. Chemical Analysis:

- a. Organic matter shall consist of approved organic material and shall make up not less than 3% nor more than 8% of topsoil.
- b. pH between 5.5 and 6.0.
- c. Soluble salt less than 0.9 millimho/cm
- d. Cation Exchange Capacity (CEC) 15 or greater
- e. Carbon/Nitrogen Ratio less than 33:1.
- f. Magnesium - Mg 125 - 265 lbs/acre
Phosphorus - P2O5 103 - 205 lbs/acre
Potassium - K2O 161 - 320 lbs/acre
Calcium - Ca 861 - 1720 lbs/acre
Soluble salts Not to exceed 900 ppm
The following elements shall not exceed the indicated amount:
Boron 3 lbs/acre
Manganese 50 lbs/acre
Potassium 450 lbs/acre
Sodium 20 lbs/acre
- g. Toxic elements and compounds shall be below a maximum level as recommended by the approved soil testing facility for the plants being grown.
- h. Pore space, 35 - 50 percent.

2.3 APPROVED PRODUCTS

- A. The area or areas from which topsoil is secured shall possess such uniformity of material depth, color, texture, drainage, and other characteristics as to offer assurance that when removed in commercial quantities, the product will be homogeneous in nature and will conform to the requirements of these specifications.

2.4 SUBMITTALS

- A. Submit a soil test from a soil testing laboratory as noted under 2.2 of these specifications.

- B. Submit the source locations of all topsoil to be used.
- C. Submit a list of all chemicals and herbicides applied to the topsoil for the last five years and a list of any plants grown in the topsoil.
- C. The Contractor shall not transport topsoil to the site without the proper testing, certifications, and acceptance by the Engineer. Topsoil transported to the site without prior approval shall not be accepted for placement and be disposed of by the contractor at their expense. All testing and certifications shall be the sole responsibility of the contractor.

PART 3: EXECUTION

- A. Placing. Before placing or depositing topsoil upon any section as shown on the plans, the foundation upon which the topsoil is to be placed shall be approved.
- B. Rip all sub-soil areas to receive topsoil to a depth of 6-8" prior to topsoil placement.
- C. Topsoil shall be installed in six inch lifts. Each lift shall be compacted to 85 percent. The final elevation of the topsoil shall be based on an 85 percent compaction rate and shall correspond to elevations shown on the plans.
- D. Maintaining the Topsoil. The contractor shall maintain the topsoil at his/her own expense until final completion and acceptance of the contract. Maintenance shall consist of preserving, protecting, replacing, and such other work as may be necessary to keep the topsoil in a satisfactory condition which shall be defined as not allowing erosion or compaction to take place.
- E. Final Cleaning. Upon the completion of this section, final cleaning shall be done within the limits of the project, and shall consist of completely cleaning the project of excess material, sweeping pavements and structures of dirt and rubbish, and the removal of any unused material which will mar the appearance of the contract or repairing any areas as determined by the Engineer as not meeting the specifications.

REVISIONS

REV. #	DATE	DESCRIPTION
1	11.06.2015	65% PROGRESS SET
2	12.11.2015	95% PROGRESS SET

DATE: NOVEMBER 2015
 JOB NUMBER:
 SCALE: AS SHOWN
 DRAWN BY: MAGJG
 DESIGNED BY: SS/MAG
 APPROVED BY: SS
 FOLDER REFERENCE:

I, the undersigned, being a duly licensed Professional Engineer in the State of Maryland, License No. 15000, do hereby certify that the documents were prepared or approved by me, and that I am a duly licensed Professional Engineer under the laws of the State of Maryland, License No. 15000, expiring on 01/20/2016.



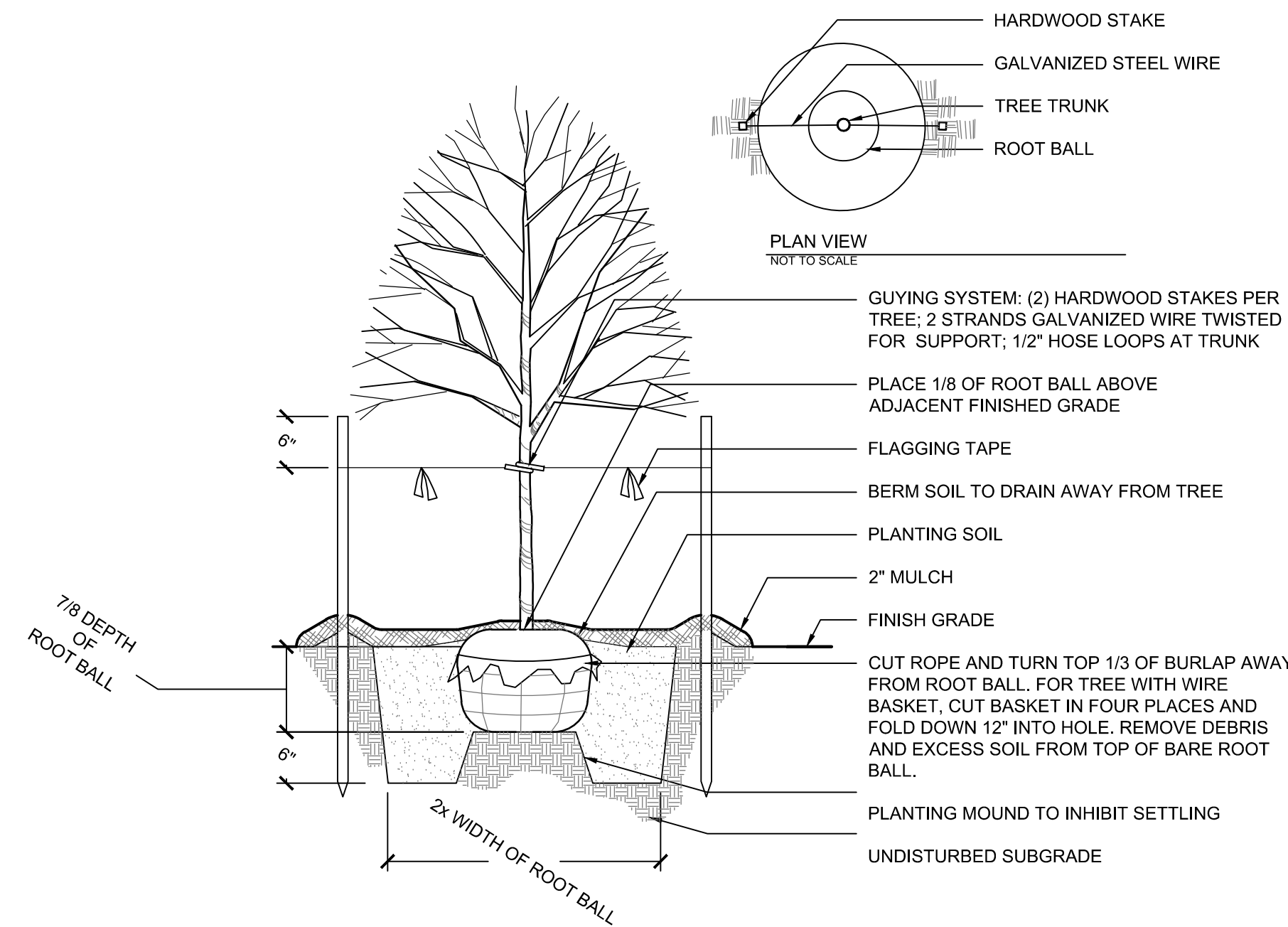
● Engineering ● Environmental Sciences
 ● Construction Services ● Land Planning & Surveying
 ANNAPOLIS ● CENTREVILLE ● ELKTON ● SALISBURY ● WILMINGTON
 320 PENNSYLVANIA AVENUE
 CENTREVILLE, MARYLAND 21617
 (410) 758-2237 * FAX (410) 758-2464
 www.mccrone-inc.com Copyright © 2015

PLANTING PLAN - BIOSWALES
 ON THE LANDS OF:
CENTREVILLE WHARF
 THIRD ELECTION DISTRICT, QUEEN ANNE'S COUNTY, MARYLAND
 TAX MAP 35H, GRID 12, PARCEL 1303, LOTS 1 & 2
 PREPARED FOR: THE TOWN COUNCIL OF CENTREVILLE

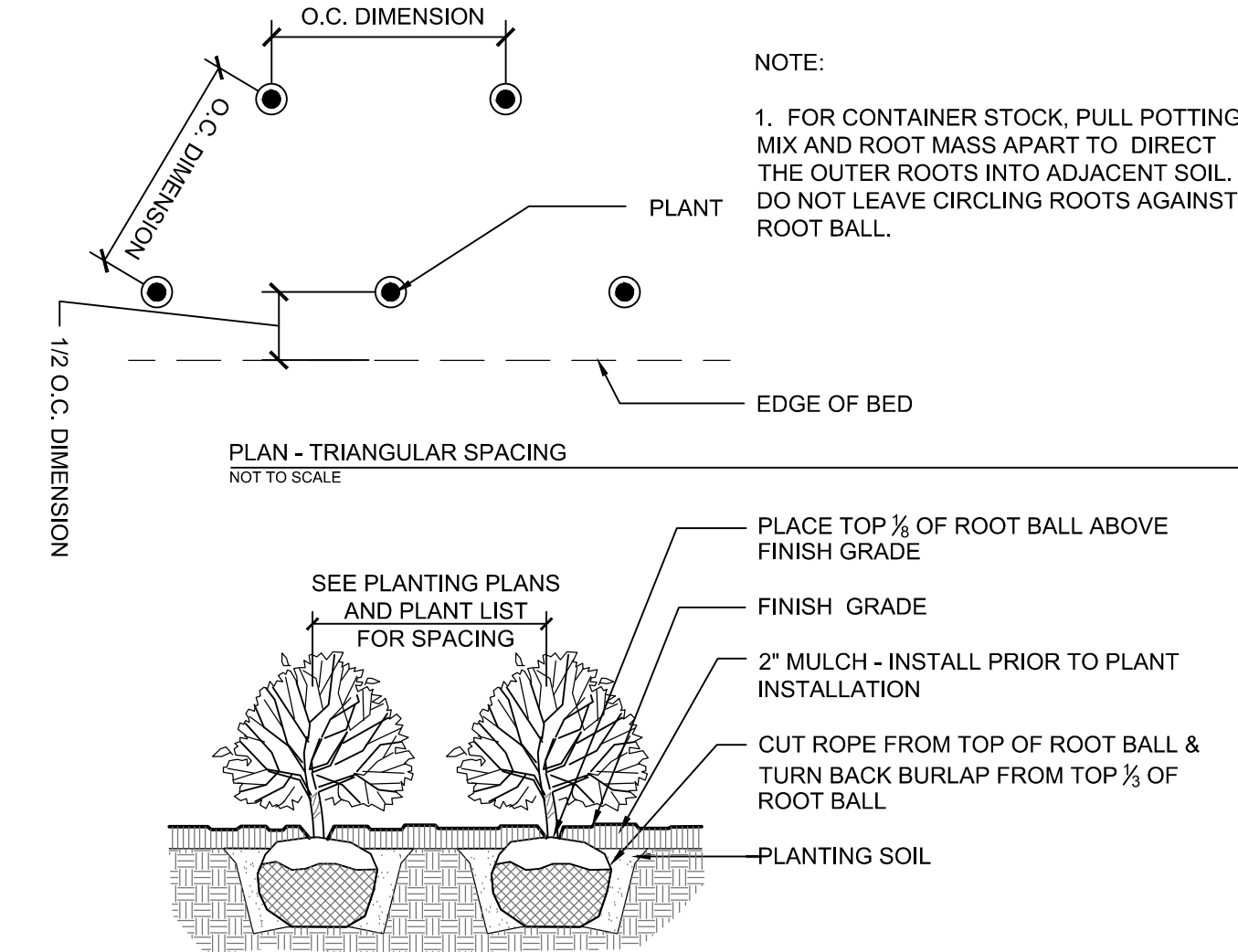
SHEET NO.:
L-11
 FILE NO.:



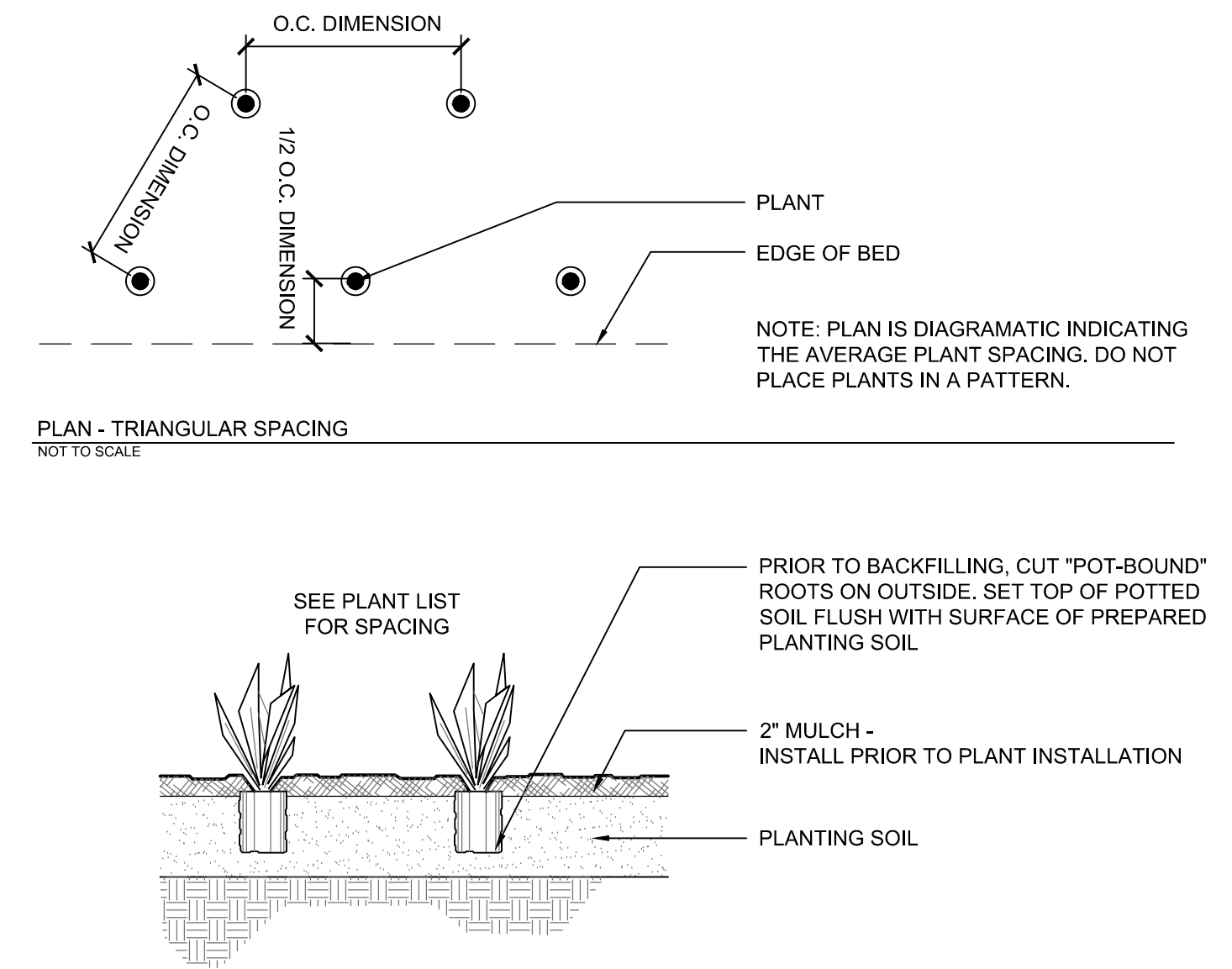
LANDSCAPE ARCHITECTURE . MASTER PLANNING . URBAN DESIGN
 1608 EASTERN AVENUE // BALTIMORE, MD 21231
 410.732.1910 // 41-.732.1960 FAX // WWW.OASISDESIGNGROUP.COM



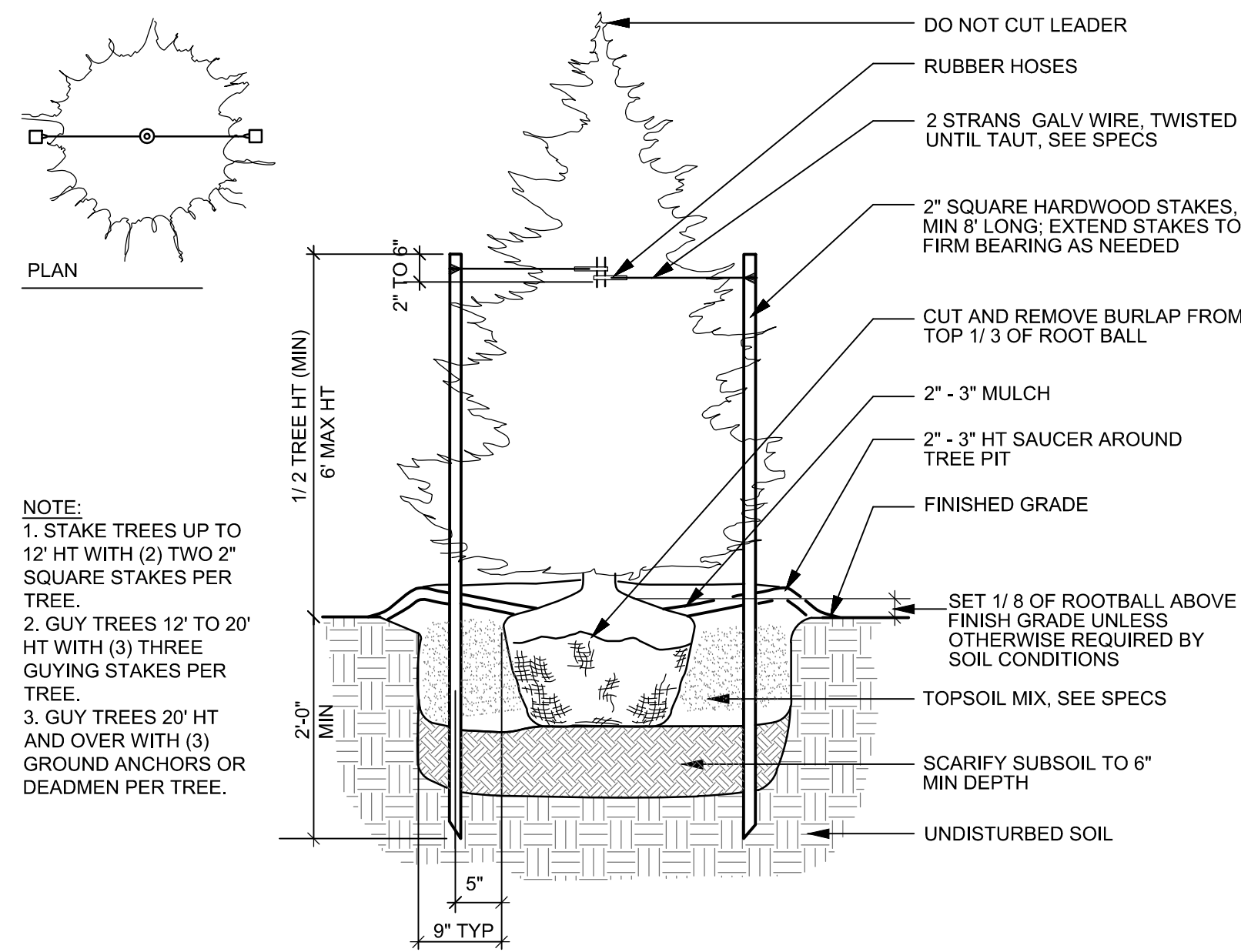
1 TREE PLANTING DETAIL
L-12 NOT TO SCALE



2 SHRUB PLANTING DETAIL
L-12 NOT TO SCALE



3 PERENNIAL PLANTING DETAIL
L-12 NOT TO SCALE



4 EVERGREEN PLANTING DETAIL
L-12 NOT TO SCALE

PLANTING NOTES

PLANT IDENTIFICATION - ALL PLANTS SHALL BE PROPERLY MARKED FOR IDENTIFICATION AND CHECKING.

LIST OF PLANT MATERIAL - THE QUANTITIES GIVEN IN THE PLANT LIST ARE APPROXIMATE ONLY. THE CONTRACTOR WILL VERIFY PLANT QUANTITIES PRIOR TO BIDDING AND ANY DISCREPANCIES SHALL BE BROUGHT TO THE ATTENTION OF THE LANDSCAPE ARCHITECT. THE CONTRACTOR SHALL FURNISH AND PLANT ALL PLANTS REQUIRED TO COMPLETE THE WORK AS SHOWN ON THE DRAWINGS. SUBSTITUTIONS SHALL NOT BE MADE WITHOUT THE WRITTEN APPROVAL OF OASIS DESIGN GROUP AND THE OWNER. THIS CONTRACT WILL BE BASED ON THE BIDDER HAVING VERIFIED PRIOR TO BIDDING THE AVAILABILITY OF THE REQUIRED PLANT MATERIALS AS SPECIFIED ON THE PLANT MATERIALS LIST.

PLANT QUALITY - ALL SHRUBS SHALL BE DENSE, HEAVY TO THE GROUND, AND WELL GROWN, SHOWING EVIDENCE OF HAVING BEEN PRUNED REGULARLY, AND SHALL BE VIGOROUS, HEALTHY AND OF GOOD COLOR. ALL PLANTS SHALL BE SOUND, FREE OF PLANT DISEASE, INFESTATION, OR INSECT EGGS AND SHALL HAVE A HEALTHY, NORMAL ROOT SYSTEM. PLANTS SHALL BE FRESHLY DUG AND NOT HEEL-ED IN STOCK, NOR STOCK FROM COLD STORAGE. ALL PLANTS SHALL BE NURSERY GROWN. PLANTS SHALL NOT BE PRUNED PRIOR TO DELIVERY. THE SHAPE OF THE PLANT SHALL, IN GENERAL, CONFORM TO ITS NATURAL GROWTH PROPORTIONS UNLESS OTHERWISE SPECIFIED. ALL PLANTS, INCLUDING CONTAINER GROWN, SHALL CONFORM TO THE BRANCHING, CALIPER AND HEIGHT SPECIFICATIONS OF THE AMERICAN ASSOCIATION OF NURSERYMEN'S PUBLICATION ENTITLED AMERICAN STANDARD FOR NURSERY STOCK, LATEST EDITION, AND SHALL HAVE A WELL-SHAPED, HEAVY-BRANCHED STRUCTURE FOR THE SPECIES. EVERGREEN TREES ARE TO HAVE AN INTERNODE NO GREATER THAN 24\"/>

PLANT SPACING - PLANT SPACING IS TO SCALE ON PLAN.

SOIL MIX - SOIL MIX WILL BE 2/3 EXISTING TOPSOIL, 1/3 LEAFMOLD THOROUGHLY MIXED AND HOMOGENIZED. OTHER ORGANIC MATERIAL MAY BE SUBSTITUTED UPON WRITTEN APPROVAL BY ODG.

ROOTBALL SIZE - THE BALL SIZE SHALL CONFORM TO THE AMERICAN ASSOCIATION OF NURSERYMEN'S PUBLICATION ENTITLED AMERICAN STANDARD FOR NURSERY STOCK, LATEST EDITION, AND SHALL BE WRAPPED IN UNTREATED BURLAP.

EXCAVATION - HOLES FOR ALL TREES SHALL BE 2 TIMES THE SIZE OF ROOT BALL OR CONTAINER AND SHALL HAVE VERTICAL SIDES. HOLES FOR SHRUBS SHALL BE 12\"/>

PLANTING - BACKFILLING SHALL BE DONE WITH SOIL MIX PREVIOUSLY DESCRIBED, REASONABLY FREE OF STONES, SUBSOIL, CLAY, LUMPS, STUMPS, ROOTS, WEEDS, BERMUDA GRASS, LITTER, TOXIC SUBSTANCES, OR ANY OTHER MATERIAL WHICH MAY BE HARMFUL TO PLANT GROWTH OR HINDER GRADING, PLANTING, OR MAINTENANCE OPERATIONS. SHOULD ANY

UNFORESEEN OR UNSUITABLE PLANTING CONDITIONS ARISE, SUCH AS FAULTY SOIL DRAINAGE, CHEMICAL RESIDUES OR INCONSISTENCIES BETWEEN PLANS AND ACTUAL SITE CONDITIONS, THEY SHOULD BE CALLED TO THE ATTENTION OF ODG AND THE OWNER FOR ADJUSTMENT BEFORE PLANTING. PLANTS SHALL BE SET PLUMB AND STRAIGHT AND TREES SHALL BE GUYED OR STAKED, WHERE REQUIRED, AT THE TIME OF PLANTING. BACKFILL SHALL BE WELL WORKED ABOUT THE ROOTS AND SEATED BY WATERING. PLANTS WILL BE PLANTED HIGHER THAN SURROUNDING GRADE. SHRUBS AND TREES WILL BE SET AT A DEPTH TO PLACE 1/8TH OF THE ROOTBALL ABOVE FINISH GRADE. REMOVE ROPE FROM ROUND TREE TRUNKS AND LAY BACK BURLAP AND WIRE BASKETS FROM TOP 1/3 OF ALL B&B MATERIAL. NYLON, PLASTIC, OR VINYL ROPE AND/OR BURLAP WILL BE COMPLETELY REMOVED FROM ALL PLANT MATERIAL PRIOR TO PLANTING.

CULTIVATION - ALL TRENCES AND SHRUB BEDS SHALL BE CULTIVATED, EDGED AND MULCHED TO A DEPTH OF 2\"/>

FERTILIZER & INOCULATION - ALL FERTILIZER SHALL BE GRANULAR, WITH 35 TO 80 PERCENT OF THE TOTAL NITROGEN IN A SLOWLY AVAILABLE FORM. FOR TREES, SHRUBS, AND GROUNDCOVER; FERTILIZER SHALL BE A COMPLETE FERTILIZER WITH A MINIMUM ANALYSIS OF 10 PERCENT NITROGEN, 6 PERCENT PHOSPHORUS AND 4 PERCENT POTASSIUM. FOR PERENNIALS, ANNUALS, AND BULBS; FERTILIZER SHALL BE A TIME-RELEASED, HIGH-PHOSPHATE FERTILIZER; I.E. OSMACOTE. FOR BULBS, FERTILIZER SHALL BE BONE MEAL (COMMERCIAL, RAW AND FINELY-GROUND), WITH AN ANALYSIS OF 4 PERCENT NITROGEN AND 20 PERCENT PHOSPHORIC ACID.

FERTILIZER SHALL BE ADDED DEPENDING ON THE SIZE OF THE PLANT AND THE MANUFACTURER'S RECOMMENDATION USING THE FOLLOWING APPLICATION RATES:

- TREES: USE 2 LB. OF 10-6-4 FERTILIZER PER INCH OF TRUNK DIAMETER.
- SHRUBS: USE 1/4 LB. OF 10-6-4 FERTILIZER PER FOOT OF HEIGHT OR SPREAD PER PLANT, OR 3-5 LBS OF 10-6-4 FERTILIZER PER 100 SQUARE FEET OF BED AREA.
- GROUNDCOVER: USE 3 LBS. OF 10-6-4 FERTILIZER PER 100 SQUARE FEET OF BED AREA.
- PERENNIALS, ANNUALS, BULBS: USE 3 LBS. OF TIME-RELEASE, HIGH-PHOSPHATE FERTILIZER (5-10-5) PER 100 SQUARE FEET OF BED AREA.
- PLANTING PITS SHALL BE BACKFILLED WITH A MIXTURE CONTAINING 80% EXISTING TOPSOIL, 20% ORGANIC MATERIAL SUCH AS LEAF MOLD, PEAT MOSS OR COMPOSED SEWAGE SLUDGE. INCORPORATE ENDO- AND ECTOMYCORRHIZAL FUNGI TRANSPLANT AMENDMENT PER MANUFACTURER'S RECOMMENDATIONS (MANUFACTURER: HORTICULTURAL ALLIANCE, INC. PHONE 1-800-628-6373).

GROUND COVER BED PREPARATION - ALL AREAS OF GROUNDCOVER SHALL BE ROTOTILLED TO A DEPTH OF 6\"/>

PERENNIAL FLOWER BED PREPARATION - A SOIL TEST SHALL BE TAKEN FOR PH ANALYSIS AND THE SOIL AMENDED WITH GROUND LIMESTONE FOR ACIDIC SOIL AND GARDEN SULFUR OR FERROUS SULFATE FOR ALKALINE SOIL AT RATES RECOMMENDED BY THE SOIL TEST. THE FINAL PH SHOULD BE BETWEEN 6.5 AND 7.0. SOIL SHALL BE SPADED TO A DEPTH OF 12\"/>

SOIL. USE NITROGEN-FORTIFIED ORGANIC MATERIAL OR SPREAD TWO POUNDS OF AMMONIUM SULFATE PER 100 SQUARE FEET. OVER THIS LAYER SPREAD A THIN LAYER OF FERTILIZER PER THE SCHEDULE UNLESS THE SOIL TEST INDICATES OTHERWISE. ROTOTIL FERTILIZER AND ORGANIC MATTER, MIXING THEM THOROUGHLY INTO THE SOIL. USE A TILLER THAT WILL CULTIVATE TO A MINIMUM DEPTH OF 8\"/>

ANNUAL FLOWER BED PREPARATION - A SOIL TEST SHALL BE TAKEN FOR PH ANALYSIS AND THE SOIL AMENDED WITH GROUND LIMESTONE FOR ACIDIC SOIL AND GARDEN SULFUR OR FERROUS SULFATE FOR ALKALINE SOIL AT RATES RECOMMENDED BY THE SOIL TEST. THE FINAL PH SHOULD BE BETWEEN 6.5 AND 6.8. SOIL SHALL BE SPADED TO A DEPTH OF APPROXIMATELY 12\"/>

GUARANTEE AND REPLACEMENT - ALL PLANT MATERIAL SHALL BE UNCONDITIONALLY GUARANTEED FOR ONE YEAR. THE GUARANTEE WILL BEGIN ON THE DATE OF FINAL ACCEPTANCE OF THE WORK. AFTER A PLANT HAS BEEN DETERMINED TO BE DEAD, DYING OR DAMAGED FROM HANDLING OR INSTALLATION, IT WILL BE REPLACED DURING THE NEXT GROWING SEASON. FOR EXAMPLE, IF A PLANT IS FOUND DEAD DURING THE SUMMER MONTHS, IT WILL BE REPLACED DURING THE FALL PLANTING SEASON. THE GUARANTEE WILL END FOR ALL PLANT MATERIAL ONE YEAR AFTER ACCEPTANCE. DURING THE GUARANTEE PERIOD, THE CONTRACTOR WILL NOT BE RESPONSIBLE FOR MECHANICAL INJURY OR VANDALISM CAUSED BY OTHER PARTIES.

MATERIAL INSPECTION - OWNER AND/OR ODG SHALL, AT THEIR DISCRETION, INSPECT PLANT MATERIAL BEFORE AND DURING DELIVERY AND INSTALLATION. PLANT MATERIAL WILL BE PROPERLY DELIVERED IN COVERED TRUCKS, AND PROMPTLY UNCOVERED WHEN DELIVERED TO PREVENT DAMAGE. MATERIAL WILL BE UNLOADED AND PROPERLY HANDLED IN SUCH A WAY AS NOT TO DAMAGE PLANTS. PLANTS WILL BE INSPECTED AND MAY BE REJECTED UPON DELIVERY AND/OR INSTALLATION BY THE OWNER FOR MECHANICAL DAMAGE, AND DAMAGE THAT WILL SUBSEQUENTLY CAUSE MISSHAPEN OR DEFORMED MATERIAL. OWNER WILL HAVE AUTHORITY TO OBSERVE SITE PREPARATION AND PLANTING INSTALLATIONS, AND HAVE THE RIGHT TO REJECT ANY WORK IF THE SPECIFICATIONS AND CONSTRUCTION DOCUMENTS ARE NOT FOLLOWED. ALL PLANT MATERIAL SHALL BE OF THE QUALITY SPECIFIED AND INSTALLED AS DESCRIBED ABOVE, AND UNLESS THESE MINIMUM STANDARDS ARE SATISFIED, THE PLANTS WILL BE REJECTED.



LANDSCAPE ARCHITECTURE • MASTER PLANNING • URBAN DESIGN
1608 EASTERN AVENUE // BALTIMORE, MD 21231
410.732.1910 // 410.732.1960 FAX // WWW.OASISDESIGNGROUP.COM

REVISIONS		
REV. #	DATE	DESCRIPTION
1	11.06.2015	65% PROGRESS SET
2	12.11.2015	95% PROGRESS SET

DATE: NOVEMBER 2015
JOB NUMBER:
SCALE: AS SHOWN
DRAWN BY: MAGJUC
DESIGNED BY: SS/MAG
APPROVED BY: SS
FOLDER REFERENCE:

● Engineering ● Environmental Sciences
● Construction Services ● Land Planning & Surveying

ANNAPOLIS ● CENTREVILLE ● ELKTON ● SALISBURY ● WILMINGTON

320 PENNSYLVANIA AVENUE
CENTREVILLE, MARYLAND 21617
(410) 758-2237 * FAX (410) 758-2464
Copyright © 2015

PLANTING DETAILS AND SPECIFICATIONS

ON THE LANDS OF:
CENTREVILLE WHARF

THIRD ELECTION DISTRICT, QUEEN ANNE'S COUNTY, MARYLAND

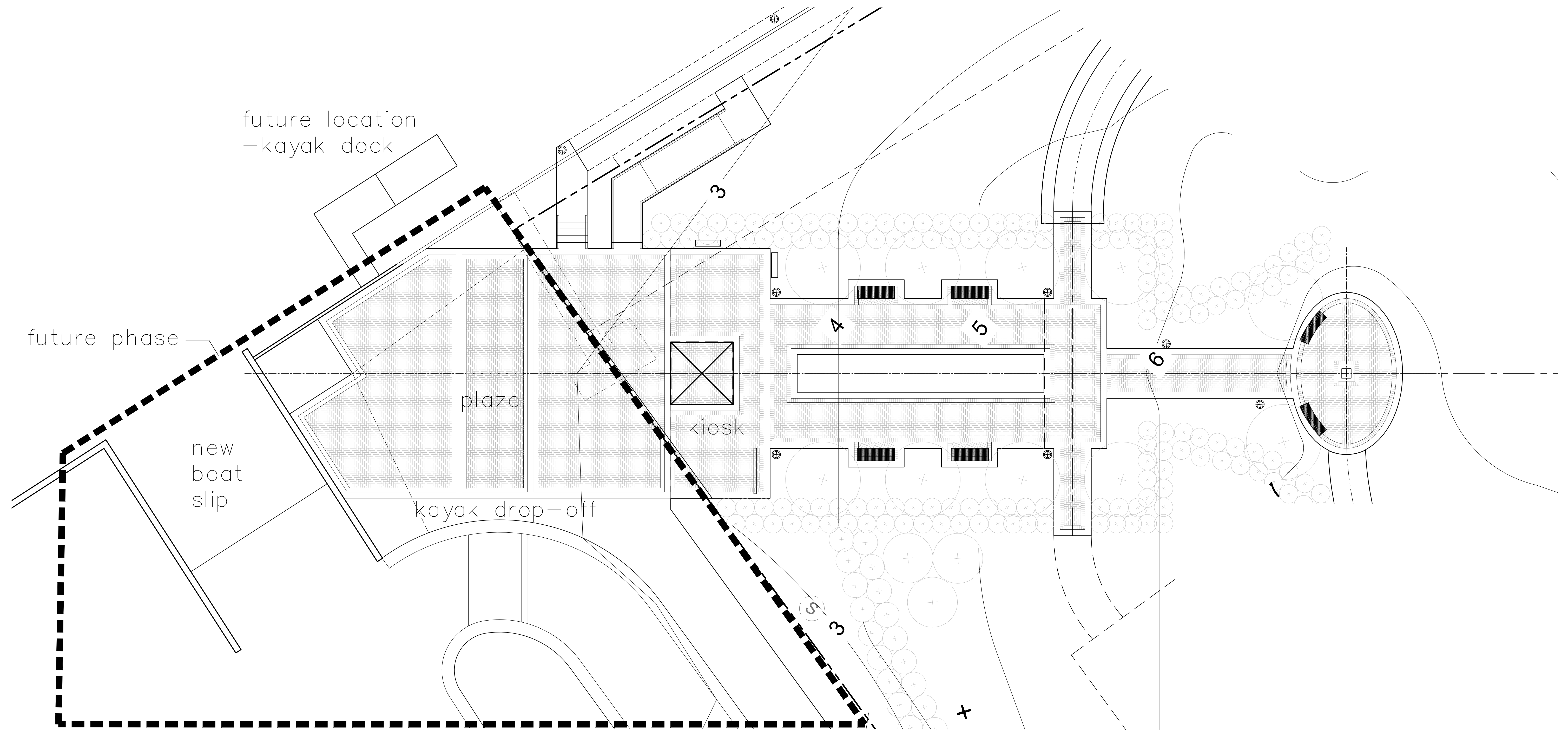
TAX MAP 35H, GRID 12, PARCEL 1303, LOTS 1 & 2

PREPARED FOR: THE TOWN COUNCIL OF CENTREVILLE

SHEET NO.:

L-12

FILE NO.:



1 PLAZA MASTER PLAN
L-13 1/8" = 1' - 0"



LANDSCAPE ARCHITECTURE, MASTER PLANNING, URBAN DESIGN
 1608 EASTERN AVENUE // BALTIMORE, MD 21231
 410.732.1910 // 41-732.1960 FAX // WWW.OASISDESIGNGROUP.COM

REVISIONS		
REV. #	DATE	DESCRIPTION
1	11.06.2015	65% PROGRESS SET
2	12.11.2015	95% PROGRESS SET

DATE:	NOVEMBER 2015
JOB NUMBER:	
SCALE:	AS SHOWN
DRAWN BY:	MAGJG
DESIGNED BY:	SS/MAG
APPROVED BY:	SS
FOLDER REFERENCE:	

The Professional Seal of a Licensed Professional Engineer or Professional Land Surveyor is required for all documents prepared or approved by me, and that I am a duly licensed Professional Engineer or Professional Land Surveyor under the laws of the State of Maryland, License No. _____, Expiration Date: _____

SEAL
 DATE 01.20.2015

MCCRONE

- Engineering
- Environmental Sciences
- Construction Services
- Land Planning & Surveying

ANNAPOLIS ● CENTREVILLE ● ELKTON ● SALISBURY ● WILMINGTON

320 PENNSYLVANIA AVENUE
 CENTREVILLE, MARYLAND 21617
 (410) 758-2237 * FAX (410) 758-2464

www.mccrone-inc.com Copyright © 2015

MASTER PLAN - PLAZA
 ON THE LANDS OF:
CENTREVILLE WHARF
 THIRD ELECTION DISTRICT, QUEEN ANNE'S COUNTY, MARYLAND

TAX MAP 35H, GRID 12, PARCEL 1303, LOTS 1 & 2
 PREPARED FOR: THE TOWN COUNCIL OF CENTREVILLE

SHEET NO.:
L-13

FILE NO.:

Z:\Projects\Centreville Wharf\CAD\13-14 Master Plans.dwg L-14

Wednesday, January 20, 2016 10:29:55 AM



- PARKLETS
- PROMENADE
- 14 TRAILER SPACES
- RELOCATED BOAT LAUNCH
- KAYAK LAUNCH
- FLAGPOLE
- WHARF KIOSK
- DROP-OFF
- OVERLOOK PAVILIONS
- PLAY AREA
- SLOPING LAWN
- CENTREVILLE WHARF ANNEX
- ADA ACCESSIBLE CROSSWALK
- PAVILION
- 32 PARKING SPACES
- 18 PROPOSED TRAILER SPACES
- SWM FACILITY
- SLEDDING LAWN
- PROPOSED CROSSWALKS
- UPLAND WETLAND or SWM FACILITY
- UPLAND PLANT COMMUNITIES
- BOARDWALKS
- TIDALLY INFLUENCED WETLAND
- MARSH
- FISHING PLATFORM

1 MASTER PLAN - WHARF ENVIRONS
L-14 1" = 50'

OASIS DESIGN GROUP
 LANDSCAPE ARCHITECTURE · MASTER PLANNING · URBAN DESIGN
 1608 EASTERN AVENUE // BALTIMORE, MD 21231
 410.732.1910 // 410.732.1960 FAX // WWW.OASISDESIGNGROUP.COM

REVISIONS		
REV. #	DATE	DESCRIPTION
1	11.06.2015	65% PROGRESS SET
2	12.11.2015	95% PROGRESS SET

DATE:	NOVEMBER 2015
JOB NUMBER:	
SCALE:	AS SHOWN
DRAWN BY:	MAGJG
DESIGNED BY:	SS/MAG
APPROVED BY:	SS
FOLDER REFERENCE:	

McCRONE
 Engineering Environmental Sciences
 Construction Services Land Planning & Surveying
 ANNAPOLIS • CENTREVILLE • ELKTON • SALISBURY • WILMINGTON
 320 PENNSYLVANIA AVENUE
 CENTREVILLE, MARYLAND 21617
 (410) 758-2237 * FAX (410) 758-2464
 www.mccrone-inc.com Copyright © 2015

MASTER PLAN - WHARF ENVIRONS
 ON THE LANDS OF:
CENTREVILLE WHARF
 THIRD ELECTION DISTRICT, QUEEN ANNE'S COUNTY, MARYLAND
 TAX MAP 35H, GRID 12, PARCEL 1303, LOTS 1 & 2
 PREPARED FOR: THE TOWN COUNCIL OF CENTREVILLE

SHEET NO.:
L-14
 FILE NO.: